

In 2018, the Town retained Pinchin to conduct a hazardous materials assessment of the Dr. Duncan Murray Recreation Centre located at 805 Switzer Drive, Hinton, AB. The assessment identified and evaluated the following materials: asbestos, lead, mercury, polychlorinated biphenyls (PCBs) and mould-contaminated materials. The following two (2) tables detail the location, drawing room number (attached), asbestos material/content and/or lead paint identified and its condition. Some of those materials presumed to be asbestos were sampled and confirmed to be asbestos or non-asbestos. The materials sampled have comments made in the tables below.

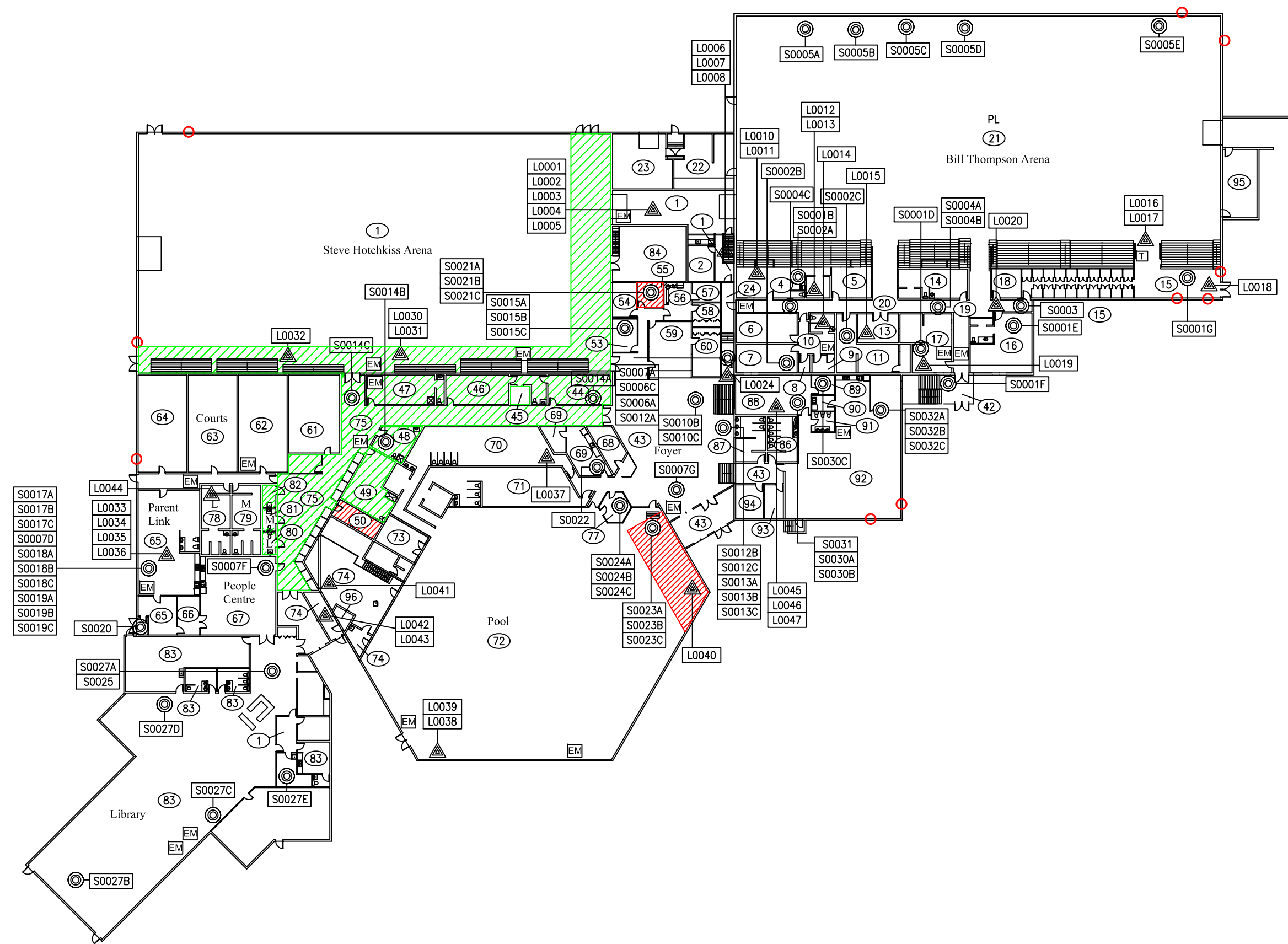
The Town performed extensive work throughout the building in 2019 to rectify any material in poor condition. Any asbestos containing materials (ACM) or lead in poor condition were either enclosed, encapsulated or removed. Each year these materials are visually inspected by the Town for condition, see condition/comments for more information.

Location	Room Number on Drawing	Asbestos Containing Materials (ACM)	Asbestos Type (%) in 2018 Report	Condition/Comment
Exterior Block Walls	n/a	Loose fill vermiculite block wall insulation	1-5% Libby Amphibole	BTA exterior walls were encapsulated with paint and cracks were sealed with caulking. All residual ACM was removed from surfaces.
Bill Thompson Arena (BTA)	Location 21	Plaster on Walls	0.1-1% Chrysotile	Material was encapsulated with paint then covered with plywood in 2019 to prevent delamination.
Janitors Room, Office, Snack Bar	Locations 50, 55, and 68	12"x12" tan with brown and white streaks vinyl floor tiles	1-5% Chrysotile	Material managed in place. 2021 Annual assessment review observed material to be in good condition.
Pool	Location 72	12"x12" tan with white streaks vinyl floor tiles	1-5%	Material managed in place. 2021 Annual assessment review observed material to be in good condition.
Steve Hotchkiss Arena and Dressing Rooms	Locations 44, 45, 46, 47, 48, 49, 52, 61, 75, 80, and 81	Black rubber floor tiles	0.1-1% Chrysotile	Material managed in place. 2021 Annual assessment review observed material to be in good condition.

Pool	Location 72	Spray-on fireproofing present	Presumed asbestos	Sample collected and confirmed as non-asbestos.
Library	Location 83	Chocolate brown vinyl sheet flooring	Presumed asbestos	Sampled and confirmed as non-asbestos.
Office	Location 59	12"x12" pink with flecks vinyl floor tiles	Presumed asbestos	Material managed in place. 2021 Annual assessment review observed material to be in good condition.
Office	Location 59	12"x12" red with flecks vinyl floor tiles	Presumed asbestos	Material managed in place. 2021 Annual assessment review observed material to be in good condition.
Office	Location 59	12"x12" black with white flecks vinyl floor tiles	Presumed asbestos	Material managed in place. 2021 Annual assessment review observed material to be in good condition.

Location	Location/Room Number on Drawing	Lead Based Paint	Comments
Shop and Bill Thompson Arena	Locations 1 and 21	Green poured concrete wall	In 2019, delaminating paint was removed and encapsulated with new paint.
Shop	Location 1	Light blue/grey wood wall	2021 Annual assessment review observed paint in condition.
Mechanical Room	Location 13	Grey block wall	Material managed in place. 2021 Annual assessment review observed material to be in good condition.
Storage, Mechanical room, Ammonia room, Youth centre, Mechanical room, Maintenance office	Locations 15, 22, 23, 31, 74, and 84	Mustard yellow block wall	2021 Annual assessment review observed paint in good condition.
Bill Thompson Arena	Location 21	Grey wood bleachers	The bleachers have been re-painted. 2021 Annual assessment

			review observed paint in good condition.
Bill Thompson Arena	Location 21	Red wood bleachers	The bleachers have been re-painted. 2021 Annual assessment review observed paint in good condition.
Youth Centre	Location 31	Crimson red block wall	2021 Annual assessment review observed paint in good condition.
Youth Centre	Location 31	Yellow drywall wall	2021 Annual assessment review observed paint in good condition.
Steve Hotchkiss Arena, First Aid room, Lifeguard office	Locations 52, 69, and 77	Dark blue block wall	2021 Annual assessment review observed paint in good condition.
Steve Hotchkiss Arena	Location 52	Dark blue wood bleachers	2021 Annual assessment review observed paint in good condition.
Steve Hotchkiss Arena	Location 52	Light blue wood bleachers	2021 Annual assessment review observed paint in good condition.
Old Parent Link, Office, Playschool Office, Laundry, Washroom, Playschool	Locations 65, 66, 88, 89, 90, 91, and 92	White metal door and trim	2021 Annual assessment review observed paint in good condition.
Mechanical room	Location 74	Red structural steel	2021 Annual assessment review observed paint in good condition.
Mechanical room, Maintenance office, Mechanical office	Locations 74, 84, and 85	Chocolate brown metal doors	2021 Annual assessment review observed paint in good condition.
Janitors room, Woman's Washroom, Men's Washroom, Laundry	Locations 50, 78, 79, and 82	Light yellow block wall	2021 Annual assessment review observed paint in good condition.
Playschool office, Washroom, Playschool	Locations 88, 91, and 92	Periwinkle blue drywall	Some of these areas have been painted with a new color. 2021 Annual assessment review observed paint in good condition.
Playschool Office, Storage, Laundry, Playschool	Locations 88, 89, 90, and 92	Sunshine yellow drywall	Some of these areas have been painted with a new color. 2021 Annual assessment review observed paint in good condition.

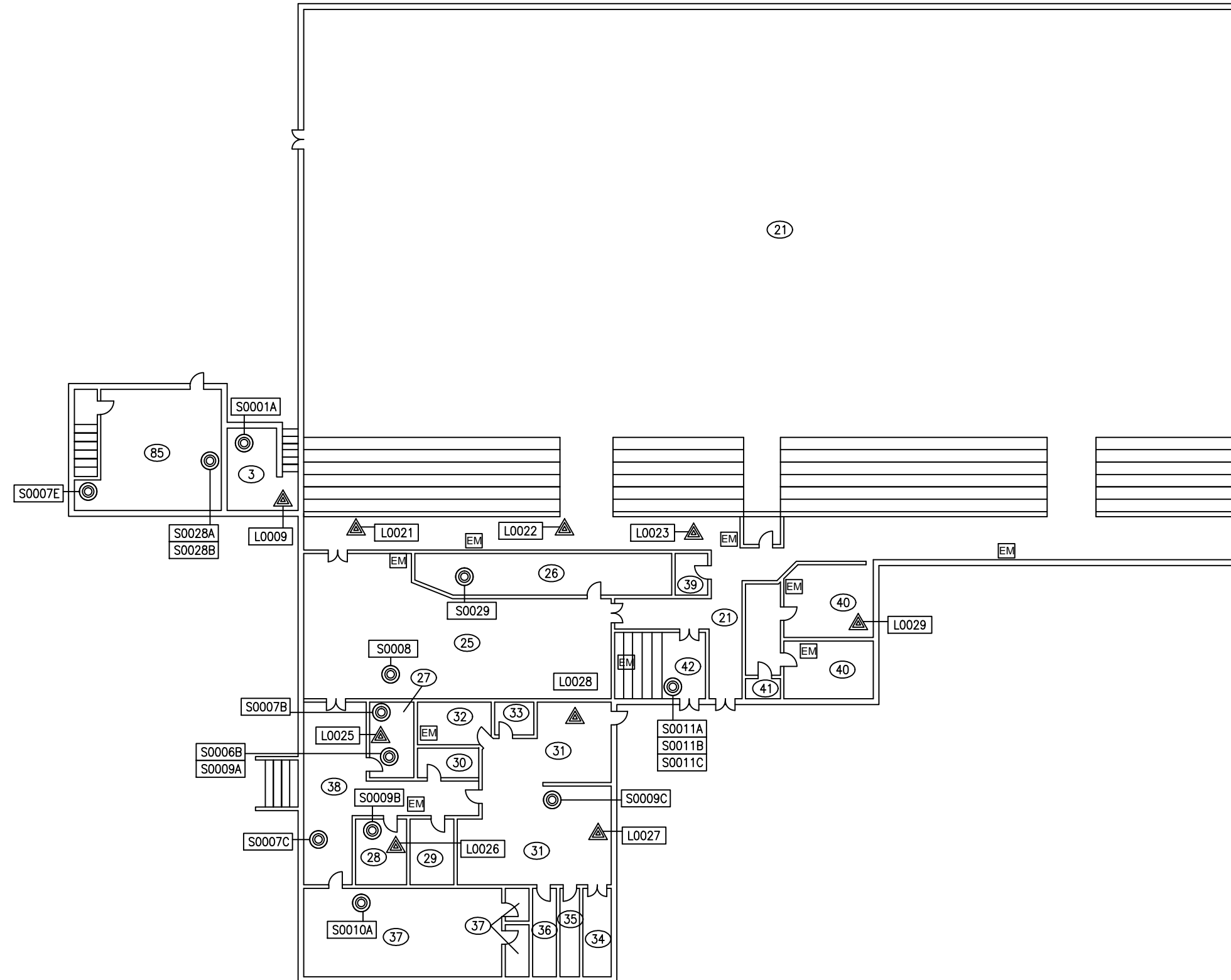


- LEGEND:**
- (X) LOCATION NUMBER
  - ⊙ ASBESTOS BULK SAMPLE LOCATION
  - ▲ LEAD SAMPLE LOCATION
  - INTRUSIVE INSPECTION LOCATIONS
- ASBESTOS-CONTAINING MATERIALS:**
- BLACK RUBBER TILES
  - VINYL FLOOR TILES
  - PL PLASTER
- HAZARDOUS BUILDING MATERIALS:**
- EM EMERGENCY LIGHT
  - T MERCURY THERMOSTAT OR SWITCH

CLIENT: <b>TOWN OF HINTON</b>	
LOCATION: <b>HINTON RECREATION CENTRE 805 SWITZER DRIVE, HINTON, AB</b>	
TITLE: <b>HAZARDOUS BUILDING MATERIALS ASSESSMENT MAIN FLOOR</b>	
DATE: 04/16/2018	PROJECT #: 220419.000
DRAWN BY: EK	DRAWING:  <b>1 OF 2</b>
CHECKED BY: LF	
SCALE: NTS	

**NOTES:**

1. ALL DRAWINGS TO BE REFERENCED WITH THE HAZARDOUS MATERIALS REPORT. NOT ALL KNOWN OR SUSPECT HAZARDOUS MATERIALS ARE DEPICTED ON THIS DRAWING. REFER TO THE HAZARDOUS MATERIALS ASSESSMENT REPORT FOR A COMPLETE LIST OF IDENTIFIED HAZARDOUS MATERIALS.
2. BASEPLAN PROVIDED BY THE CLIENT.
3. LEGEND IS COLOUR DEPENDENT, PHOTOCOPIES MAY ALTER INTERPRETATION OF FIGURE.
4. ASBESTOS-CONTAINING LOOSE-FILL VERMICULITE INSULATION IS PRESENT IN BLOCK WALLS.



**LEGEND:**

- (X) LOCATION NUMBER
- ⊙ ASBESTOS BULK SAMPLE LOCATION
- ▲ LEAD SAMPLE LOCATION
- INTRUSIVE INSPECTION LOCATIONS

**ASBESTOS-CONTAINING MATERIALS:**

- BLACK RUBBER TILES
- VINYL FLOOR TILES
- PL PLASTER

**HAZARDOUS BUILDING MATERIALS:**

- EM EMERGENCY LIGHT
- T MERCURY THERMOSTAT OR SWITCH

**CLIENT:**

TOWN OF HINTON

**LOCATION:**

HINTON RECREATION CENTRE  
805 SWITZER DRIVE, HINTON, AB

**TITLE:**

HAZARDOUS BUILDING  
MATERIALS ASSESSMENT  
SECOND FLOOR

**DATE:**

04/16/2018

**PROJECT #:**

220419.000

**DRAWN BY:**

EK

**DRAWING:**

2 OF 2

**CHECKED BY:**

LF

**SCALE:**

NTS

**NOTES:**

1. ALL DRAWINGS TO BE REFERENCED WITH THE HAZARDOUS MATERIALS REPORT. NOT ALL KNOWN OR SUSPECT HAZARDOUS MATERIALS ARE DEPICTED ON THIS DRAWING. REFER TO THE HAZARDOUS MATERIALS ASSESSMENT REPORT FOR A COMPLETE LIST OF IDENTIFIED HAZARDOUS MATERIALS.
2. BASEPLAN PROVIDED BY THE CLIENT.
3. LEGEND IS COLOUR DEPENDENT, PHOTOCOPIES MAY ALTER INTERPRETATION OF FIGURE.
4. ASBESTOS-CONTAINING LOOSE-FILL VERMICULITE INSULATION IS PRESENT IN BLOCK WALLS.