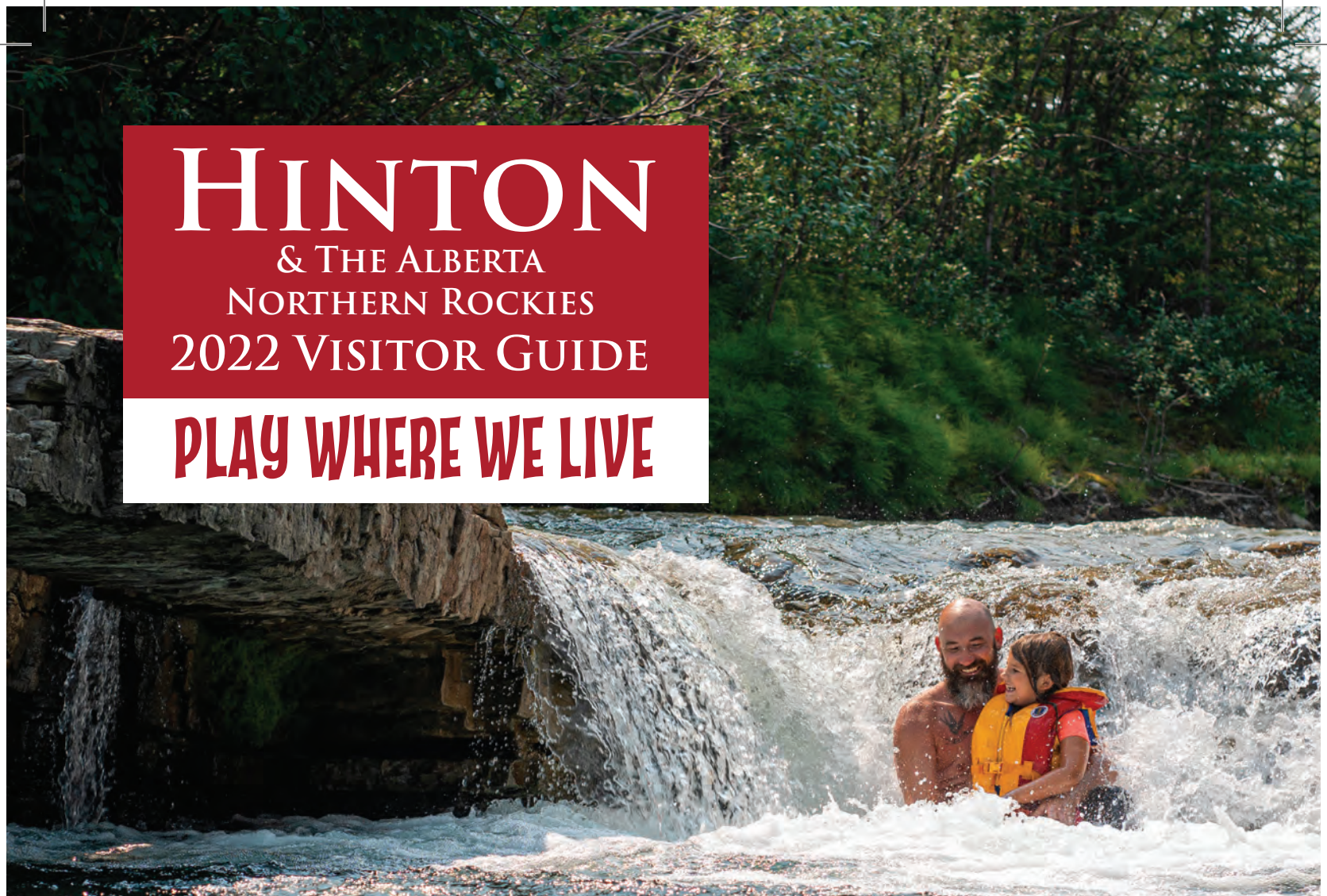


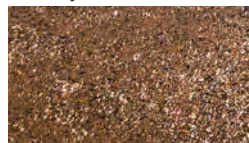
# HINTON

& THE ALBERTA  
NORTHERN ROCKIES  
2022 VISITOR GUIDE

**PLAY WHERE WE LIVE**



  
Explore Hinton



    **HINTON**  
& DISTRICT  
CHAMBER OF COMMERCE



*Welcome to the Town of*

**HINTON**



## **RESPECTFUL OF OUR PAST, CREATING OUR FUTURE**

Hinton is a community of opportunity – an active, culturally rich, safe environment in which to grow.

### **KEEP IN TOUCH**

Find out about our events and programs, latest news and opportunities at [www.hinton.ca](http://www.hinton.ca).

Sign up for notifications and emergency alerts at [www.hinton.ca/notifyme](http://www.hinton.ca/notifyme).

Connect with us on the Town of Hinton Facebook page, [www.facebook.com/TownofHinton](https://www.facebook.com/TownofHinton).

[www.hinton.ca](http://www.hinton.ca)





# WELCOME

## to Hinton and the Alberta Northern Rockies

From our pristine waterways and untapped wilderness to a diverse network of parks, trails, services and amenities, we welcome you to our playground in Hinton and the Alberta Northern Rockies.

Hinton is the gateway to a treasure trove of outdoor adventure, whether it be in Jasper National Park, the Provincial Parks paradise known as the Alberta Northern Rockies, or out and about on the vast stretches of nearby crown land.

Our backyard is a mecca for hikers, bikers, skiers, hunters, fishers and quadders – not to mention the rock climbers, white water rafters, canoers and kayakers.



Come for the adventure.  
Stay for the hospitality.

FREE WI-FI\*

Available at the Green Square and Visitor Information Centre.

\*WI-FI sponsored by the Hinton & District Chamber of Commerce.

Published by:

The Hinton & District Chamber of Commerce  
Designed by: Sarah Burns/The Hinton Voice

The 2022 Hinton & The Alberta Northern Rockies Visitor Guide is a publication of the Hinton & District Chamber of Commerce.

No part of this publication may be reproduced without written consent of the publisher.

Every effort has been made to ensure the accuracy of the listings and information shown, and we regret any errors or omissions. The publisher assumes no responsibility for inaccuracies of the information.

PRINTED IN CANADA

©Hinton & District Chamber of Commerce 2022  
309 Gregg Ave., Hinton, AB T7V 2A7  
Phone: 780-865-2777 • Toll Free 877-446-8666  
[www.hintonchamber.com](http://www.hintonchamber.com)

in Partnership with



A WARM WELCOME	4
FUN FACTS ABOUT HINTON	5
VISITOR INFORMATION CENTRE	6
GATEWAY TO THE ROCKIES	7
MOUNTAIN BIKE MECCA	8 & 9
BEAVER BOARDWALK	10 & 11
RIVERFRONT PARK	13
STAY ANOTHER DAY	14
LOCAL ATTRACTIONS	15
THE FESTIVAL SCENE	16
FLORA & FAUNA	17
#EXPLOREHINTON	19
MARY REIMER PARK	20
HINTON'S HISTORY	22
INDIGENOUS CULTURE	24
GOLFING IN HINTON	25
TOWN OF HINTON MAP	28-30
ATHABASCA LOOKOUT TRAIL	33
WILLIAM A. SWITZER PROVINCIAL PARK	34 & 35
WILLMORE WILDERNESS PARK	37
PIERRE GREY'S LAKES	38
ROCK LAKE - SOLOMON CREEK	39
BRULE	40
WILDHORSE & KINKY LAKES	42
HORSES, HEROES, HISTORY & HINTON	43
WHITEHORSE WILDLAND PROVINCIAL PARK	44
ALBERTA FOREST SERVICE MUSEUM	45
SUNDANCE PROVINCIAL PARK	46
JASPER	47
DISC GOLF	48
OFF ROAD ADVENTURES	49
REELING THEM IN - FISHING	50
CADOMIN	53
ALBERTA NORTHERN ROCKIES & YELLOWHEAD COUNTY	54
ACCOMMODATIONS & ADVENTURES	55
RETAIL	56
RESTAURANTS	57



# A Warm Welcome

## A Message from the Town of Hinton and the Hinton & District Chamber of Commerce

There's a moment, as you drive into Hinton, when it is all laid out in front of you.

It's just after the highest point on the entirety of the Yellowhead highway, as you head west towards the townsite. Conveniently enough, there's a rest stop there. When you drive by, consider stopping, and looking out at Hinton and our surrounding region.

You can see the incredible Canadian Rocky Mountains, looming behind the community. As you look, the mind travels, considering the potential of this rugged splendor – mountain biking, hunting, skiing, swimming, running, quadding, horseback riding, and on and on and on. With William A. Switzer Park, Jasper National Park, and wide swathes of crown land, your options are near limitless.

That limitless feeling, that bevy of opportunity, that's what we want you to feel as you read this visitor guide.

We've always been a base camp. As the end of rails in a time when rail was the main means of transportation, countless adventures and explorations set out from right here, and you join them in your voyage. We've gotten really, really good at outfitting explorations, too. Hintonites are friendly, hospitable people, and many of us run and staff the hotels, restaurants, shops, service companies, and tourism operators. This is who we are, and we're working to be even better than ever.

You'll find in this guide, and around Hinton, references to #explorehinton. It's an idea, that shopkeepers and business operators have an obligation to seek out ways to provide the best possible service, selection, and value, just as the customer is obligated to look locally before travelling elsewhere to fill their needs. By stopping here, by recreating here, by volunteering here,



Chamber President Nathan Schneider and Mayor Marcel Michaels  
pictured at the Visitor Information Centre.

you're a part of the movement. Show us what that means to you; post your picture online with the hashtag #explorehinton.

We are proud to say our community welcomes newcomers and visitors. We are warm, active people; we love our community and its accomplishments.

On behalf of the Hinton and District Chamber of Commerce and the Town of Hinton, we invite you to visit and discover it all for yourself.



309 Gregg Avenue  
Hinton, Alberta T7V 2A7  
Toll Free 1-877-446-8666  
Phone 780-865-2777  
[www.hintonchamber.com](http://www.hintonchamber.com)



2nd Floor  
131 Civic Centre Road  
Hinton, Alberta T7V 2E5  
Phone 780-865-6000  
[www.hinton.ca](http://www.hinton.ca)



# FUN FACTS

## about Hinton

We're glad you came to our four-season playground where the weather and climate help fuel the fun.

If you are here in the summer you're likely taking advantage of our long hours of sunshine – we average around 2,100 hours of sunshine a year!

Visitors love to take advantage of these long days, whether by booking an early morning tee off, or watching the sun go down over the mountains in a radiant display of reds, pinks and oranges as late as 11 pm at the height of the season.

Thanks to our location in the foothills at the edge of the Rocky Mountains, we also enjoy the fringe of the Chinook winds. Besides meaning cooler summers, it also means slightly warmer temperatures for our winter guests!

If you are here in the winter you might enjoy ice fishing, and world-class cross country skiing – not to mention the abundant snowmobiling opportunities and fatbiking. All these activities are helped along by our ample snow base, with an average annual snowfall of 119 cm (46.85 inches).

No matter when you're here, or for what reason, Mother Nature is generally a willing partner in making your visit a memorable one.

Hinton is a hot spot for geocachers, with more than 250 caches within a 20 km radius.

## How Far is Hinton?

From Banff, AB.....366 km  
 From Calgary, AB..... 581 km  
 From Grande Prairie, AB ..... 333 km  
 From Grande Cache, AB.....149 km  
 From Edmonton, AB.....288 km  
 From Jasper, AB.....77 km  
 From Edson, AB.....87 km

From Lethbridge, AB.....710 km  
 From Medicine Hat, AB.....865 km  
 From Fort McMurray, AB .....725 km  
 From Valemount, BC.....202 km  
 From McBride, BC.....245 km  
 From Kamloops, BC.....523 km  
 From Clearwater, BC.....396 km



**NO APPOINTMENT NECESSARY. SERVICE WHILE YOU WAIT.**  
**COMPETITIVE PRICES. SERVING ALL MAKES AND MODELS.**

Life is better at  **Quick Lane**<sup>®</sup>  
 TIRE & AUTO CENTRE

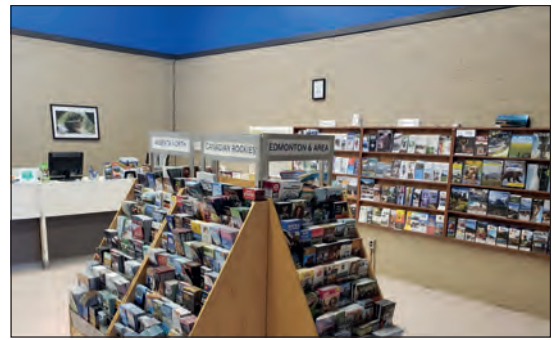
**764 Carmichael Lane 780-865-5657**  
**[www.hintonquicklane.com](http://www.hintonquicklane.com) [info@hintonquicklane.com](mailto:info@hintonquicklane.com)**



# Hinton Visitor Information Centre

Located off the Yellowhead Highway at 309 Gregg Avenue in the Green Square and central shopping district of Hinton. The Visitor Information Centre (VIC) is one of more than 100 community and regional Visitor Centres located throughout the province.

The VIC has received high acclaim and recognition in Travel and Alberta Culture and Tourism articles with their "Above and Beyond" service to travellers, and in 2016 they were presented with a "Community Ambassador" Award at the annual Hinton & District Chamber Business Awards Gala. They are also a 2017 AMMY Award Winner for Individual Excellence - Leader in Visitor Services.



The Hinton VIC offers many services and amenities to the public, including:

- Free WIFI
- Interpretive signage throughout the centre showing things to see and do in the area
- Facilitated Accommodation, Campground and Tour bookings
- Highly trained and professional local, regional and provincial travel consultation
- Free Community Ambassador training programs (for local businesses and staff)
- High quality local and provincial brochures, maps, guides and travel paraphernalia.
- National Park Passes, National Park Fishing Licences, Hot Springs passes and Sky Tram flight pass sales.
- Merchandise sales – Maps, pins, postcards, Books and Artwork
- Disability access washrooms
- Notice boards displaying up-to-date information on weather, road reports, wildlife "warnings" and local and provincial festivals and events.
- Pursuit Reservations

If you are a visitor or have moved to Hinton, visit the VIC to find out what information and resources they can provide to make your stay in Hinton more than you could ever imagine.



**RENTAL AND LOANER VEHICLES AVAILABLE**  
**COMPLEMENTARY VEHICLE CHARGING LOCATION**  
**VALET SERVICES**  
**NO APPOINTMENT NECESSARY QUICK LUBE**

**186 Tocher Avenue | Hinton**  
**[www.bigrockdodge.com](http://www.bigrockdodge.com)**  
**780-865-3010 | 1-877-316-1229**



# HINTON

## Gateway to the Rockies

Hinton is a regional hub of recreation, health care and retail in the West Yellowhead region, also serving neighbouring Grande Cache, Jasper and Edson.

It has a population of around 10,000 and is 270 km west of Edmonton and 80 km east of Jasper along the twin-lane Yellowhead Highway (Hwy. 16). It is a short 15-minute drive to the Jasper National Park boundary and about 3 hours from the world famous West Edmonton Mall.

The Town has developed in two separate areas, about 5 km apart, known to residents as the Hill and the Valley – separated by Highway 16. This geographical dispersion is accounted for by the fact that Hinton actually started out as two communities – Drinnan and Hinton. There are shopping and service nodes in both areas, as well as at Parks West Mall on the west end of town.

The town boasts a number of outdoor recreational facilities and attractions, including the Beaver Boardwalk, Canada's longest freshwater boardwalk, a free-access mountain bike park, skateboard park, numerous paved and maintained gravel trails, tennis courts, a campground, baseball diamonds, soccer fields, rodeo grounds and a challenging 18-hole golf course. You'll also find various parks and playgrounds, a riverfront park with a boat launch, an off-leash dog park and a Disc Golf course.

Indoor recreational facilities are excellent, with a 25 meter indoor pool, a toddler pool, hot tub and sauna, racquetball and squash courts, two arenas, a daycare facility, a youth centre and a curling rink. Hinton also has the Northern Rockies Museum of Culture and Heritage, for

all your history needs. [www.northernrockiesmuseum.com](http://www.northernrockiesmuseum.com)

Venues just outside town include a gun and archery range. The Hinton Nordic Centre is a world-class venue for cross-country skiing, and mountain biking, and is located on Highway 40 North.

With the mountains next door the opportunities for camping, hiking, downhill skiing, quadding, snowmobiling, fishing, and hunting are abundant.

Hinton hosts multiple world-class festivals and events, from the Wild Mountain Music Festival to the 2015 North American and Canadian Biathlon Championships, as well as orienteering, road & mountain biking, marathon and endurance racing, music, culture, art, dance and culinary events.

Accommodations offered in the local area run from teepees with bed and breakfast service, to full-featured hotels with indoor swimming pools and restaurants. Some facilities also have night clubs and lounges, for partygoers who enjoy after dark activities.

Hinton has a variety of camping opportunities in the area. Available campgrounds vary between municipal, private, forest and recreation managed, or Alberta Parks managed (more than 30 options). There are a full range of campsite amenities available to choose from, including drive-through and hike-in, serviced to unserviced, and reservable to self-registration.

Hinton houses the largest Forestry Training School in Alberta with the Alberta Forestry Museum and trails. It also offers health services to the community and region at the Hinton Hospital.

Flip through this guide for even more on the area.





# Mountain Bike

The Hinton Mountain Bike Association (HMBA) was formed by a few buddies that saw a need to improve mountain biking in Hinton and has since established the community as one of the foremost mountain bike destinations in Western Canada.

The momentum has been built, in part, through the promotion of some signature annual events like the Beaver Bike Fest, and the Dirt Jam Under The Lights.

The Hinton Bike Park, located at 281 Robb Road, has also played host to AFD Gravity Cup downhill racing events.

Hinton also hosts the MS Bike Tour - which was the first off-road version of the annual fundraiser in Canada.

Dates and details for local mountain bike events and club rides can be found at [www.bikehinton.com](http://www.bikehinton.com).



# MECCA



## ROJO MARRÓN

— MEXICAN RESTAURANT & CAFE LTD. —

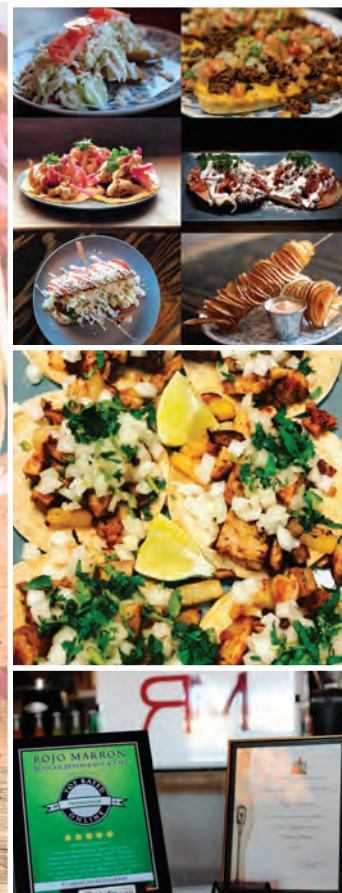
**Order  
Online!**

**Rustic Mexican Cantina  
with Hearty Authentic  
Menu Shaped by Family  
Recipes Serving a Variety  
of Mexican Cuisine like  
Burritos, Enchiladas, Street  
Tacos, Mexican Tacos and  
more! We also Offer a Best  
Selection of Gourmet Coffee,  
Espresso & Tea!**

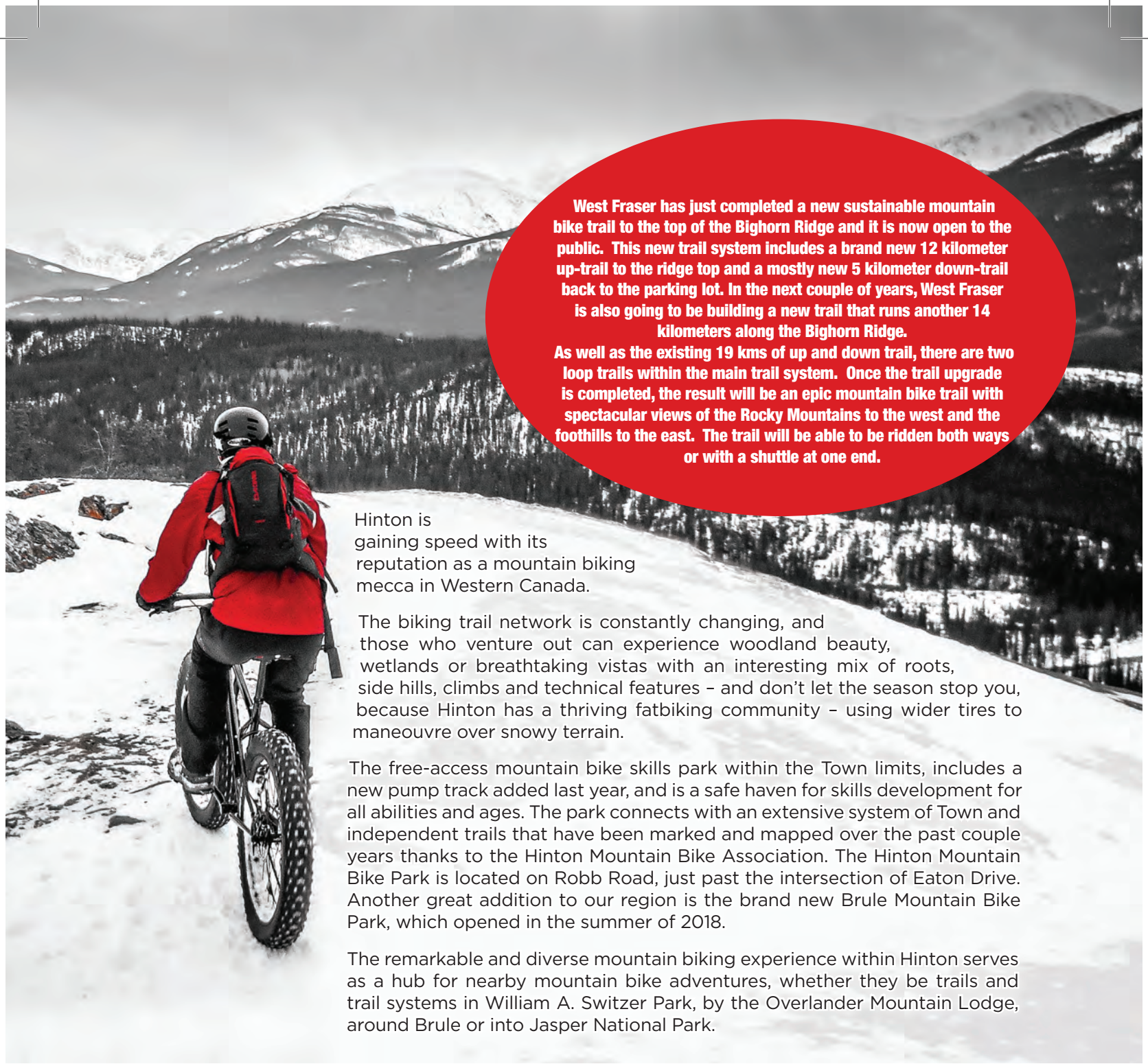


163 Athabasca Ave, Hinton • (780) 865-7664

[rojomarron.com](http://rojomarron.com)







**West Fraser has just completed a new sustainable mountain bike trail to the top of the Bighorn Ridge and it is now open to the public. This new trail system includes a brand new 12 kilometer up-trail to the ridge top and a mostly new 5 kilometer down-trail back to the parking lot. In the next couple of years, West Fraser is also going to be building a new trail that runs another 14 kilometers along the Bighorn Ridge.**

**As well as the existing 19 kms of up and down trail, there are two loop trails within the main trail system. Once the trail upgrade is completed, the result will be an epic mountain bike trail with spectacular views of the Rocky Mountains to the west and the foothills to the east. The trail will be able to be ridden both ways or with a shuttle at one end.**

Hinton is gaining speed with its reputation as a mountain biking mecca in Western Canada.

The biking trail network is constantly changing, and those who venture out can experience woodland beauty, wetlands or breathtaking vistas with an interesting mix of roots, side hills, climbs and technical features – and don't let the season stop you, because Hinton has a thriving fatbiking community – using wider tires to manoeuvre over snowy terrain.

The free-access mountain bike skills park within the Town limits, includes a new pump track added last year, and is a safe haven for skills development for all abilities and ages. The park connects with an extensive system of Town and independent trails that have been marked and mapped over the past couple years thanks to the Hinton Mountain Bike Association. The Hinton Mountain Bike Park is located on Robb Road, just past the intersection of Eaton Drive. Another great addition to our region is the brand new Brule Mountain Bike Park, which opened in the summer of 2018.

The remarkable and diverse mountain biking experience within Hinton serves as a hub for nearby mountain bike adventures, whether they be trails and trail systems in William A. Switzer Park, by the Overlander Mountain Lodge, around Brule or into Jasper National Park.



**VICIOUS  
CYCLE**



**BIKE RENTALS  
SALES & REPAIRS**

[jasperbikerental@gmail.com](mailto:jasperbikerental@gmail.com)

Jasper 780 852 1111



**SKI & SNOWBOARD  
RENTALS & SALES**

Hinton 780 865 7787





# BEAVER BOARDWALK

The world's longest freshwater boardwalk is a great family outing that showcases the local wetland system around Maxwell Lake.

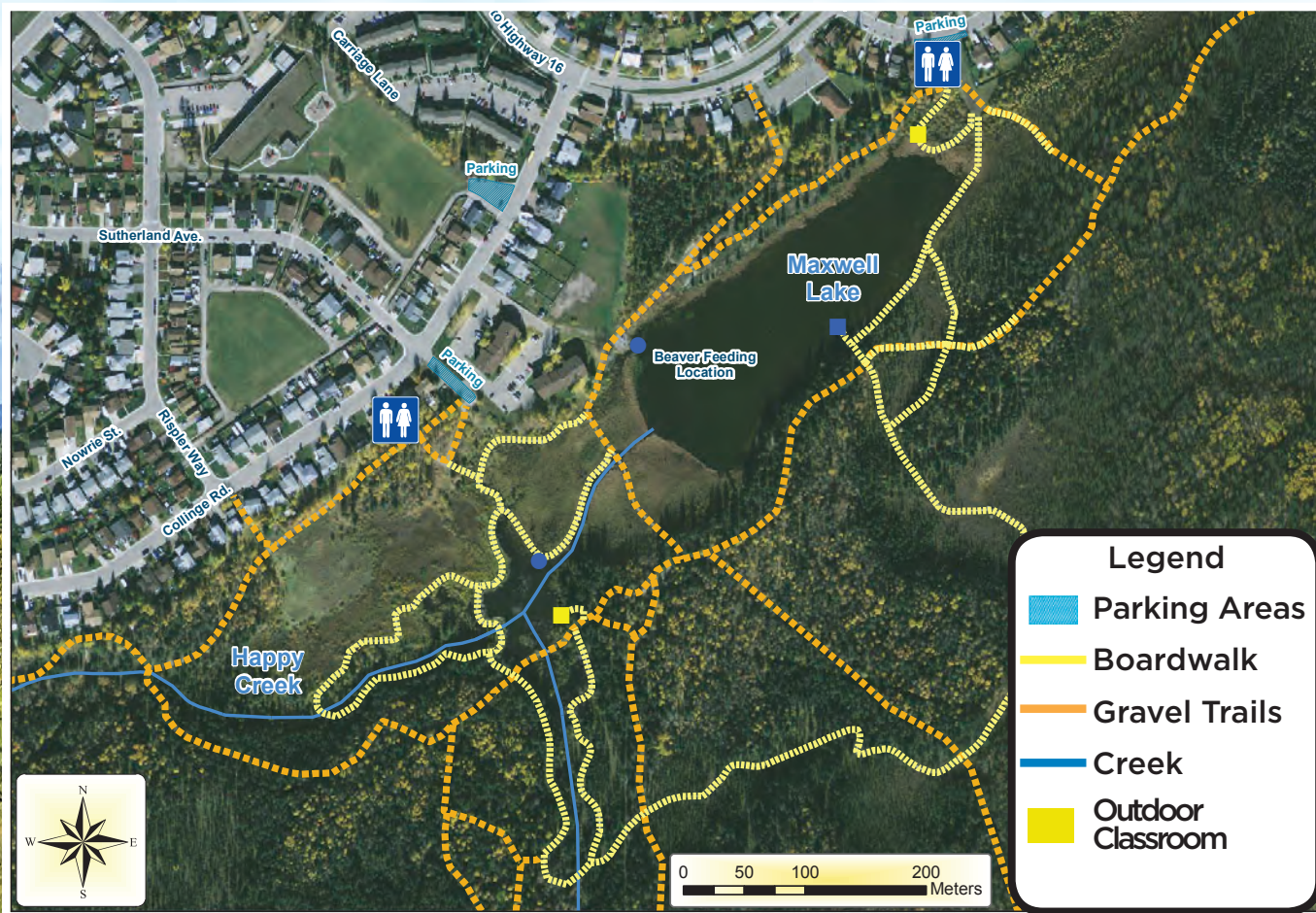
Built over a number of years through volunteer effort with corporate support, the attraction features more than three kilometres of boardwalk, seating areas, interpretive signs and two observation towers.

More than a dozen beavers, as well as countless other wildlife, call this wetland area home. Visitors should take in the boardwalk in the early morning or evening for the best chance to see these busy beavers in action.

The boardwalk is a recognized destination for birding enthusiasts and photographers, and attracts avid birdwatchers looking to check some important species off their to-watch list. More information on birding in the area can be obtained from the local Whiskeyjack club at [wjclub@telus.net](mailto:wjclub@telus.net).







Beyond animals and birds, it's not altogether uncommon to see local musicians and singers congregating for the occasional evening serenade.

Visitors are encouraged to use the Green Square parking lot to unhitch and park large travel trailers or fifth wheels, or to seek street parking on Collinge Road in front of Maxwell Lake Apartments.

The Beaver Boardwalk, also known by locals as the "Beebo," is accessible by public transit. See the centre map on pages 28-30 for transit stop details.



**Grill & Chill**

**Orange Julius**





**Make Birthdays Special**

[DQCakes.com](http://DQCakes.com)

**ORDER NOW**

All participating locations

- Blizzards
- Shakes
- Smoothies
- Orange Julius
- Burgers
- Chicken Strips
- Snack Melts
- Cakes

**OPEN 7 DAYS A WEEK**  
**FROM 10:00 AM TO 10:00 PM**  
**DINE-IN, TAKE OUT & DRIVE THRU**  
**804 CARMICHAEL LANE,**  
**HINTON, AB-T7V 1T1**  
**PHONE: 780-865-8832**  
**EMAIL: [cakeshinton@gmail.com](mailto:cakeshinton@gmail.com)**  
**[www.dairyqueen.com](http://www.dairyqueen.com)**




**Order Online at [feastify.com](http://feastify.com)**



# *Parks, Trails & Open Spaces*



Hinton has the rare privilege of expansive, easy to access, trail networks that connect numerous parks and open spaces.

Odds are, wherever you are in Hinton, there's a trail, open space, or park nearby for you and your family to enjoy.

Find out for yourself! For trail maps and park and playground information, go online to [www.hinton.ca/outdoors](http://www.hinton.ca/outdoors).

[www.hinton.ca/outdoors](http://www.hinton.ca/outdoors)





# ATHABASCA RIVERFRONT PARK

## Trails and History

**Hinton's Athabasca Riverfront Park is an exciting addition to its premium local park and trails system. The park was opened in 2015 with ample parking, toilet facilities, maintained trails with lookouts situated along the river, picnic facilities and a boat launch completed in 2017.**

**The park is located at 600 West River Road with directional signage provided. Athabasca River Float Tours are available from May to September by booking with Hinton Rafting Adventures.**

**The Athabasca River was a major travel corridor in the development of western North America. Stop in at the Visitor Information Centre to learn about its rich history in the development of the nation.**



## The Old Grind

Welcome to Hinton's favourite local gathering place!  
Cafe and Caterer with ❤️

Offering delicious food and drink in a warm, eclectic atmosphere!  
Check out our offerings at [theoldgrind.ca](http://theoldgrind.ca)

Fast, Easy,  
Online ordering!

❤️ Locally owned ... Locally loved ❤️



@theoldgrindcafe

175 Pembina Ave, Hinton (780) 865-1934

Located along Hwy 16 at Green Square, behind the Visitor Information Centre





# Stay Another Day!

## OUTDOOR ENTHUSIASTS



### Beaver Boardwalk

Wander along the world's longest freshwater boardwalk and see the many beavers that call the area home. Use the connecting trails to view Maxwell Lake and the two scenic lookout towers.

[www.explorehinton.org/beaver-boardwalk](http://www.explorehinton.org/beaver-boardwalk)



### Hinton Mountain Bike Park and Trails

Test your pedal mettle at the skills park or go for an exhilarating ride on the 50 km of trails right in Hinton's backyard! Bike rentals are available in town.

[www.bikehinton.com](http://www.bikehinton.com)



### William A. Switzer Provincial Park

Hot day? Take a refreshing swim in one of the many lakes in Switzer Park. Located 20 minutes from Hinton, day use areas, boat launches and campsites are some of the many amenities you will find.

[www.albertaparks.ca](http://www.albertaparks.ca)



### Golfing

Visit the Hinton Golf Club and enjoy a round in the beautiful, renowned 18-hole course.

[www.hintongolfclub.com](http://www.hintongolfclub.com)



### The West Fraser Guild

The Performing Arts Theatre of Hinton houses live performances, stage shows, concerts, and is also the home of Hinton Movies. So if you're looking for a quiet night after a wild day, stop in and see what's playing on the stage!

[www.pathinton.ca](http://www.pathinton.ca)

No matter what activities you enjoy, stop in at the Information Centre and speak to staff about the many things to do in the area.

**Hinton Information Centre**  
**Green Square, Highway 16**  
**780.865.7000**

## FAMILY ACTIVITIES



### Athabasca Riverfront Park

Stretch your legs and enjoy the view of the mighty Athabasca River! Don't forget to pack a lunch and a Frisbee for your visit!

[www.explorehinton.org/athabasca-riverfront-park](http://www.explorehinton.org/athabasca-riverfront-park)



### Dr. Duncan Murray Recreation Centre

Visit the indoor swimming pool, courts, bouldering wall, skate park and more!

[www.hinton.ca/rec](http://www.hinton.ca/rec)



### Rotary Spray and Play Park

Cool off in the spray park on a hot afternoon, or get active on the play park! Located adjacent to the Dr. Duncan Murray Recreation Centre.

[www.hinton.ca/parks](http://www.hinton.ca/parks)



### Municipal Parks

Too many to count! Playgrounds and green spaces are located all over Hinton. Visit [www.explorehinton.org/other-municipal-parks](http://www.explorehinton.org/other-municipal-parks) to learn more.



### Historical Driving Tour

Visit the Travel Alberta Hinton Visitor Information Centre or any municipal building to pick up a copy of the historical driving tour map. Learn about Hinton's history and get to know the lay of the land!

[www.hinton.ca/DocumentCenter/View/4403](http://www.hinton.ca/DocumentCenter/View/4403)



### Cardinal Divide

Travel the historic Coal Branch route, down Highway 40 south to Cadomin. Hike the Cardinal Divide trail along Alberta's Northern Rocky Mountains. Suitable for families.

[www.albertaparks.ca](http://www.albertaparks.ca)



Explore Hinton

**[www.explorehinton.org](http://www.explorehinton.org)**



# ATTRACTIONS and AMENITIES

## **Skateboard Park**

Located at Dr. Duncan Murray Recreation Centre, one of the top skate parks in Canada.

## **Mary Reimer Regional Park**

Located on East River Road, this park features rodeo grounds, ball diamonds, soccer fields, an off-leash dog park and a playground.

## **Lions Park**

Located at 277 Mountain Street, this park has BBQ facilities and great children's play equipment. It has wheelchair access and easy walking trails, as well as basketball hoops, outhouses, ample parking and picnic tables.

## **Kinsmen Park**

Located at 579 Switzer Dr. along Hardisty Creek this park has paved walking trails, children's play equipment, washrooms and a seasonal outdoor rink.

## **Outdoor Tennis Courts**

Gerard Redmond Community Catholic School, 174 Maligne Dr.  
Harry Collinge High School, 158 Sunwapta Dr.

## **Indoor Pickleball**

821 Switzer Dr. at the PATH

## **Natural Resources Interpretive Trail**

North side of Highway 16, behind McDonald's.  
Self-guided interpretive trails, a fire lookout tower, giant mine truck, playground and picnic area.

## **Hinton Municipal Library & Hinton Archive Centre**

803 Switzer Drive (located in the Dr. Duncan Murray Recreation Centre)  
780-865-2363, [www.hintonlibrary.org](http://www.hintonlibrary.org)

## **Northern Rockies Museum of Culture & Heritage**

225 Gregg Avenue  
[www.facebook.com/NorthernRockiesMuseum](https://www.facebook.com/NorthernRockiesMuseum)  
[www.northernrockiesmuseum.com](http://www.northernrockiesmuseum.com)

## **Hinton Farmer's Market (indoors)**

Hinton Centre (965 Switzer Drive) 11:00 am - 2:00 pm,  
Thursdays from March to December.  
Visit them on Facebook for dates and info.

## **The West Fraser Guild - Home of the Performing Arts**

821 Switzer Dr. Managed by PATH, the Performing Arts Theatre of Hinton. [www.pathhinton.ca](http://www.pathhinton.ca).  
Visit [www.hintonmovies.ca](http://www.hintonmovies.ca) for movie schedule.





## PARKS WEST MALL



**Antem**  
Growing Places

[www.parkswestmall.com](http://www.parkswestmall.com)  
480, 900 Carmichael Lane  
Hinton, AB

 Find us on  
**Facebook**



# The Festival SCENE



The Hinton area is emerging as a festival hot bed and we're worth a look if you're in the neighbourhood.

Whether it's the rocking vibe of marquee names like Blue Rodeo, Serena Ryder and Sloan at the Wild Mountain Music Festival, one of many winter-themed events and celebrations during the Snowflake Festival, or the pancake breakfast, voyageur canoeing and other fun learning opportunities at Alberta Parks Day ... it's worth checking out what draws several thousand people to these events each year!

Winter Magic Festival  
February

Lantern Festival  
February

Hinton Growler Fat Bike Race  
February

Challenge in the Rockies  
March

Indigenous People's Day  
June

Canada Day & Parade  
July 1st

Wild Mountain Music Festival  
July 15,16,17

Mary Reimer Memorial Rodeo  
July

Canada Parks Day  
July

Hinton Run in the Rockies  
September 17

Terry Fox Run  
September

Hinton Snowflake Parade  
December



## QUALITY LADIES FASHIONS & ACCESSORIES

Locally Owned & Operated

181 Pembina Ave  
Hinton, AB  
coldcreekclothing.ca

**COLD CREEK**  
• CLOTHING •



# FLORA & FAUNA

## in the Region



The western wood lily (*Lilium philadelphicum*) This large orange flower opens upward. It is a protected plant in Canada, it is also the provincial flower of Saskatchewan. Blooms from June to August.

The province of Alberta's floral symbol, the Alberta wild rose (*Rosa acicularis*), also known as prickly rose. Blooms June - August. It produces plentiful hips after flowering which have nutritional and medicinal purpose. Rose hips make excellent wine, jelly, syrup, and tea.



Red Paintbrush (*castilleja spp.*) is a member of the figwort family and is likely one of the best-known and most widespread wildflowers in the Canadian Rockies. It is also Hinton's official flower.



Yellow Lady's-Slipper (*cyripedium calceolus*) also known as Moccasin Flower, Greater Yellow Lady's Slipper, also called *Cypripedium parviflorum*. A small yellow orchid with a large bag, two twisted sepals to the sides, and one above.



Bears - (Grizzly and Black Bear)  
Grizzly Bear: a pronounced hump appears on their shoulders. Black Bear: They may have coats that range from blond, cinnamon, light or dark brown, but in the Northern Rockies they are mostly jet black.



Elk or Wapiti - one of the largest species within the deer family (Cervidae) and one of the largest land mammals in North America. Males are called bulls, while females are called cows.



Beaver - A large, primarily nocturnal, semiaquatic rodent. Their colonies create one or more dams to provide still, deep water to protect against predators and survive cold winters.



Bighorn Sheep is a species of sheep named for its large horns. These horns can weigh up to 30 lb. They range in colour from light brown to greyish or dark brown and have a white rump and lining on the backs of all four legs.



Cougars - also known as the mountain lion, puma, panther or catamount. They are adaptable and can survive in any location that provides them with cover and a food source, such as deer.

**HELICOPTER CHARTER SERVICE**  
**SCENIC HELICOPTER TOURS**  
**HELICOPTER HIKING TRIPS**

780-865-3353  
www.yhl.ca  
email: hinton@yhl.ca







# # HintonFirst

## What is Hinton First?

A movement to strengthen our local economy by encouraging residents and businesses to consider Hinton, Alberta FIRST before spending time, money, or energy elsewhere.

## What is the goal of Hinton First?

To foster the development of local non-profits, businesses, and visitor experiences through an encouraged change in mentality. We ask for consideration for the local potential of our existing services before heading out of town to spend, volunteer or recreate.

Consider sharing your #HintonFirst experiences through your social media platforms using #HintonFirst or follow the Hinton First Instagram account.

## Visitors

Visitors to Hinton have a unique opportunity to try out what makes Hinton proud. Our community is home to a large number of shops, restaurants, and service providers that are eager for a chance at your business. As well, the recreational and outdoor opportunities offer a full itinerary of experiences for you, your family and friends.

Tourism is an exchange. Just like you're supporting Hinton, Hintonites are likely travelling to or through your hometown, and making purchases there. Share how your home community is embracing local business, amenities and culture by emailing [info@hintonfirst.ca](mailto:info@hintonfirst.ca)!

## Residents

When a resident buys locally, they are doing more than just making a purchase; they're making an investment in their community. But #HintonFirst is also about much more than just shopping local. It's about spending your time and your energy experiencing and supporting Hinton as your adopted or original hometown.

## Businesses

Businesses have a large stake in our community and a role to play in developing and supporting the ideas of #HintonFirst. Customers are looking for service, selection and value from local businesses. A #HintonFirst business strives to shine in these areas, and to accept feedback from customers on how to make their experience the best it can be.

## Who is the HREDC?

The Hinton and Region Economic Development Coalition is a new collaborative approach to economic development in our region is bringing together the experience and expertise of groups such as the Hinton Chamber of Commerce and the Town of Hinton, as well as local professionals and business owners. To further support this new coalition, the group has tapped into support from Alberta Labour and the Alberta Economic Development Association.

Visit [www.hintonfirst.ca](http://www.hintonfirst.ca) for more information on Hinton First and the Hinton and Region Economic Development Coalition, email [info@hintonfirst.ca](mailto:info@hintonfirst.ca) or call the HREDC chair at 780-865-6003.





# Explore Hinton

## WHAT IS IT?

Explore Hinton is an initiative of the Hinton Chamber of Commerce and is being supported by the Town of Hinton. The initiative is a multi-dimensional project aimed at showcasing Hinton experiences—everything Hinton has to offer, and for everyone—to encourage locals and non-locals to get out there and (literally) Explore Hinton.

## WHERE CAN I CHECK OUT MORE?

- Visit our website for engaging visual and written content on Hinton and the surrounding Northern Rockies
- Follow our social media channels on Facebook and Instagram
- Stop by our seasonally staffed and open year round Hinton Visitor Information Centre

[explorehinton.org](http://explorehinton.org) | [@explorehinton](https://www.instagram.com/explorehinton)





# MARY REIMER PARK

*A gift of generosity and play*

Local resident Charlie Milner bought a homestead east of lower Bliss (now known as Mary Reimer Park) in 1920. He employed Thomas Thorsen to manage this farm from 1921 to 1925, growing hay for dairy stock in Jasper. Thorsen shared his young life with two sisters, Mary [Reimer] and Emma [Nickerson]. Many years later, the original Mary Reimer Park was established in 1995 as a result of 60 acres (24.28 Ha) of agricultural land being donated to the Town in memory of the land owner's sister, Mary Reimer. For more Hinton Historical stories visit the Hinton Visitor Information Centre, the Northern Rockies Museum of Heritage and Culture or take the Historical Driving Tour – downloadable PDF map here: [hinton.ca/DrivingTour](http://hinton.ca/DrivingTour).

Located at 399 East River Road, in the Hinton Valley District, the Municipality has worked hard to develop various public access and event facilities in the park including -

- Multiple Slo-Pitch/Baseball Diamonds
- Food Booth (Events Only)
- Pavilion
- Picnic Tables
- Playground
- Rodeo/Gymkhana Grounds
- Multiple Soccer Fields
- Maintained local Trails
- Washrooms
- Off leash dog park



Mary Reimer Park hosts the annual Mary Reimer Memorial Rodeo. This three day event in July is a must-see and must-do family-friendly show. To see dates, times and event listings, join the "Mary Reimer Memorial Rodeo - R.V.R.A" Facebook page.

Check out these other popular rodeos in the Hinton area:

The Lane Cust Invitational  
May

Medicine Lodge Rodeo  
[www.medicinelodgerodeo.com](http://www.medicinelodgerodeo.com)  
May

Oil Country Barrel Challenge  
September



**780-865-4892**

Open 7 Days a Week • 10:30 am to 11:00 pm • Delivery after 4:00 pm • 414 Carmichael Lane, Hinton, AB

**Located on Hwy 16 West in HINTON • Across from the Hinton Holiday Inn**

Proudly Serving HINTON & Area for Over 25 Years

**Pizza & Spaghetti House**

Licensed & Air Conditioned Family Restaurant • Outside Patio

**Pizza • Italian Dishes • Greek Dishes  
Charbroiled 1/4 Pounders • Steaks • BBQ  
And more delicious options!**







FairfaxLake



**Campgrounds managed by FRMA:**

- Big Berland
- Emerson Lakes
- Gregg Cabin
- Lovett River
- Pembina Forks
- McLeod Group
- McLeod River (South)
- Watson Creek
- Whitehorse Creek
- Wildhorse Lake
- Cardinal River
- Elk River
- Fairfax Lake
- Obed Lake
- Petite Lake
- McLeod River (North)
- Rock Lake
- Wildhay Group
- Kinky Lake

**Trails managed by FRMA:**

- Bighorn Trail
- Emerson Lakes Trail
- Pine Management Trail
- Spruce Management Cross-Country Ski Trails
- McLeod Silviculture Interpretive Trail
- Canyon Creek Trail
- Happy Creek Trail
- Wild Sculpture Trail

The Foothills Recreation Management Association is a group of companies and organizations committed to providing, safe, affordable, and enjoyable recreational opportunities. Together, we manage 19 campgrounds and eight trail systems in the Foothills area of Alberta. Our campgrounds are inexpensive, and we provide free firewood.

For reservations or to inquire about camping and other recreational opportunities, please contact Fox Creek Development Association at (780) 865-2154. Fox Creek, a non-profit Aboriginal owned and operated organization, has maintained our campgrounds and trails for over 20 years.



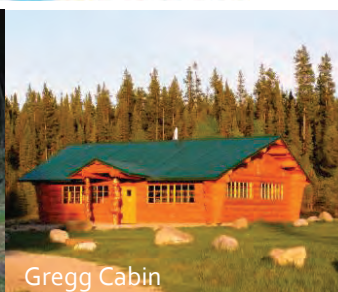
**Teck**



Whitehorse Creek



Rock Lake



Gregg Cabin



Petite Lake





## HINTON'S HISTORY

Photo Courtesy  
Glenbow Archives NA-379-2

Hinton is a thriving, growing community that offers residents and visitors up-to-the-minute, 21st century lifestyles and technology. Imagine life in earlier days and the landscape of Hinton when it began as a community in 1911 and even before that time when the first "travelers" passed through the area.

Close your eyes and imagine the river valleys and foothills, home for many centuries to First Nations people, landscape very like what you see today. The early 19th century was the beginning of the arrival and influence of European explorers. These new travellers to the river valleys and foothills were blazing trails through the new world and were often guided by First Nations and Métis people.

In December 1810 explorer/map maker David Thompson arrived in the area on his way to map a route through the Athabasca Pass. Thompson and his party travelled west along the Athabasca River going south from the frozen river in the area that is currently Mary Reimer Regional Park in Hinton. The explorer travelled farther west and camped for 25 days in the Brule area.

The route mapped by Thompson continues to be a main travel and trade corridor from the prairies to the Rocky Mountains and on to the western coast of Canada.

Imagine the sounds and the smells as the old steam engine rolls into Hinton in August 1911, the first passenger train to arrive at the newly constructed Railway Station

House along the Grand Trunk Pacific Rail line.

During the first few years the population of Hinton was 500 and after 1912 the population declined 92 in 1921. Hinton saw little growth until the opening of local coal mines in the late 1920s. Those mines were part of a vast network of regional mines that became known as the Coal Branch. Hinton maintained this activity through to the 1950s when the sound of steam engines travelling the rail lines were no longer heard.

The pages of life in Hinton began a new chapter in the mid 1950s when the construction of a pulp mill was announced. Effective Nov. 1, 1956, the New Town of Hinton was incorporated and Hinton was no longer a hamlet. The village of Drinnan was incorporated Jan. 1, 1957. Leaders in both Hinton and Drinnan worked together for amalgamation, which took place effective April 1, 1957 and Hinton reverted to town status on Dec. 29, 1958.

The stories of our community tell of a vibrant history that has been and still remains reliant upon economic boom and bust industries. The residents of Hinton, those who have stayed and those who have not, have all seen the many ups and downs brought on by economic factors. It is the people, calling Hinton home, who have ensured the continued settlement and continuing development of Hinton. Today, Hinton attracts residents who enjoy the wilderness surroundings, the community spirit, and the employment opportunities of the region.

As modern day  
residents and visitors,  
we are still influenced  
by the route mapped  
by Thompson.



### Scenic horseback trail rides & riverside camping

**Ten minutes northwest of Hinton  
along the Athabasca River**

Please phone or e-mail for reservations

Phone 780-865-4760  
e-mail: [oldentrance@yahoo.com](mailto:oldentrance@yahoo.com)  
website: [www.oldentrance.ab.ca](http://www.oldentrance.ab.ca)  
HWY 40 North, 26118 Old Entrance Road



**Visit** *because of the reviews.*  
**Stay** *because of the experience.*

## NORTHERN ROCKIES MUSEUM

Housed in Hinton's original Grand Trunk Pacific Station House, the Northern Rockies Museum is one of Hinton's newest attractions. We feature exhibits on railway, industry, natural history, and more. Become fully immersed into local history with engaging tours and authentic experiences.

*'This new little museum is a must visit in Hinton.'* ROGER35G

*'Best and most interesting lesson I have had in some time.'* SheilaP

*'[The] unexpected highlight of our journey through the Rockies.'* Lancastrians16

*'We could have spent hours listening to [the] stories!'* Peter N Heather

**225 Gregg Avenue • Hinton, Alberta • Tuesday to Saturday • 9 to 5**  
**[northernrockiesmuseum.com](http://northernrockiesmuseum.com) • 780.801.2643**



HCBA 009.09.763

Martha Spittle on 1936 Taraplane, 1936

Source: Coal Branch Archives, Hazel Hart Collection (Aitken)

## Historical Driving Tour of Hinton

Learn about Hinton's history and explore the community with the Historical Driving Tour. You will discover elements of Hinton's past throughout the ten stops included in the tour, such as the Woodley Homestead, Hinton Collieries and the Hinton Coal Branch Archives. Stand at the Historical Marker for Main Street Hinton and Hinton Station looking up at what is now Hwy 16, and visualize main street Hinton with the help of some fascinating photos depicting life in the early 1900s. Pick up a full Driving Tour map at the Hinton Visitor Information Centre in Green Square.

The Historical Driving Tour is a partnership between the Hinton Historical Society, the Town of Hinton, and the Hinton Municipal Library and Archives.



**HINTON MUNICIPAL  
LIBRARY &  
ARCHIVES**



# Embracing INDIGENOUS CULTURE & EVENTS



There's a rich Indigenous History and Identity in the Northern Rockies! If you like to immerse yourself in the ways of native peoples – their dance, stories, drum beats, artwork, foods and song, then everywhere you travel in this region, you will cross its path.

Various Indigenous celebrations and displays are offered to locals and visitors to participate and interact with at Parks Day celebrations in the regional Alberta Parks and National Parks. Hinton's own Föhn Festival, our town's celebration of multiculturalism and diversity on Canada Day, also hosts Indigenous song, dance, and food offerings. There are also Aboriginal Day celebrations and events listed across the Northern Rockies and province for visitors and locals to be a part of.

In Hinton, we have the Hinton Friendship Centre, located at 965 Switzer Drive. The Hinton Friendship Centre is an Indigenous non-profit organization committed to improving the quality of life of Indigenous people in an urban environment. The Hinton Friendship Centre Society strives to develop strength, pride, hope, and mutual respect through the delivery of programs, services, facilities, and community awareness by being respectful of Indigenous teachings. Hinton Friendship Centre offers various events throughout the year. For more information, visit [www.hintonfriendshipcentre.ca](http://www.hintonfriendshipcentre.ca).

Cultural History and sites: William A. Switzer Park features significant natural heritage sites providing provincial representation of the upper and lower foothills, high biological diversity, and important cultural heritage sites. There are two known burial grounds in and near the park that contain the graves of natives and Métis who once settled the area. Many of the old-style burial grounds include structures commonly referred to as "spirit houses". These wooden shelters often resemble small A-frame huts. The "houses" were meant to protect the remains of loved ones and items they might require in the next world. Some have crosses and fences representing Christian influence. Interpretive programs and educational talks and consultation are available to you by the Park staff in the William A. Switzer Visitor Centre, located at Kelley's Bathtub during (May to September).



Moberly House: Jasper National Park. The Moberlys lived in the area now defined as the Jasper National Park from the early 1800s until the early 1900s. The departure of the extended family and others was as a consequence of a declaration signed by the federal government of the day that created the Jasper Forest Park of Canada. On the site, there are a couple of interpretive panels installed in the area and on a pathway to the grave site of Suzanne Kwarakwante. These panels will give you some basic background on the family and their significance to the area. Many of the Moberly Families

descendants still live and remain in the Jasper and Hinton area. See your friendly Travel Alberta Hinton Visitor Information consultants for directions or go online to [www.pc.gc.ca](http://www.pc.gc.ca) to find out about this National Historic site.



## BUILDING COMMUNITY TOGETHER.

309 Gregg Avenue, Hinton • [www.hintonchamber.com](http://www.hintonchamber.com)  
1-877-446-8666 (toll free) • 780-865-2777 (local)



[www.facebook.com/hintonchamber](https://www.facebook.com/hintonchamber)



# GOLF IN HINTON

Welcome to the Hinton Golf Club, where breathtaking golf is at your fingertips!  
The Hinton Golf Club caters to golfers of all abilities, with tee options for  
beginners right through to advanced players.

The course offers some of the best mountain views that Hinton has to offer  
- as well as a scenic layout and exceptionally manicured green space.

If you're in the area through the off season, you can  
still stop by the course for a stroll, a dog walk,  
some cross country skiing or even snow shoeing.

For more information, visit  
[www.hintongolfclub.com](http://www.hintongolfclub.com).



780-865-2904  
[www.panobar.ca](http://www.panobar.ca)



PANO BAR & GRILL WAS ESTABLISHED IN 2020 TO PROVIDE OUR PATRONS AND VISITING GUESTS WITH AN OUTSTANDING MENU AND RELAXING ENVIRONMENT. THE NAME "PANO" COMES FROM OUR PANORAMIC PATIO THAT EDGES ALONG OUR ENTIRE CLUBHOUSE.

WITH AMAZING VIEWS OF THE ROCKY MOUNTAINS, THIS PATIO IS SURE TO IMPRESS. OUR PROFESSIONAL STAFF WILL PROVIDE CATERING FOR MEETINGS, CONFERENCES, WEDDINGS, AND GOLF TOURNAMENTS.



**TREE LINED FAIRWAYS & BEAUTIFUL VISTAS**

- 18 public golf course - Everyone Welcome!
- Driving range and practice greens
- Fully stocked golf shop

760 Keil Drive, Hinton, AB | 780-865-2904 | [hintongolfclub.com](http://hintongolfclub.com)







NORTHERN LAKES  
COLLEGE

## SUPPORTED DISTANCE LEARNING

*provides flexible educational  
opportunities allowing our students  
to balance work and family and  
access their classes from anywhere.*

*Apply now!*

[www.northernlakescollege.ca](http://www.northernlakescollege.ca)



# Skate, Climb, Swim & More



## DR. DUNCAN MURRAY RECREATION CENTRE

The Dr. Duncan Murray Recreation Centre offers visitors and residents alike a venue to get up to all of your favourite athletic and recreational pursuits. Find our pool, two ice surfaces, courts, and more, like our Youth Centre and Municipal Library, all in one central location.

## NEED TRANSPORTATION?

### USE HINTON TRANSIT!

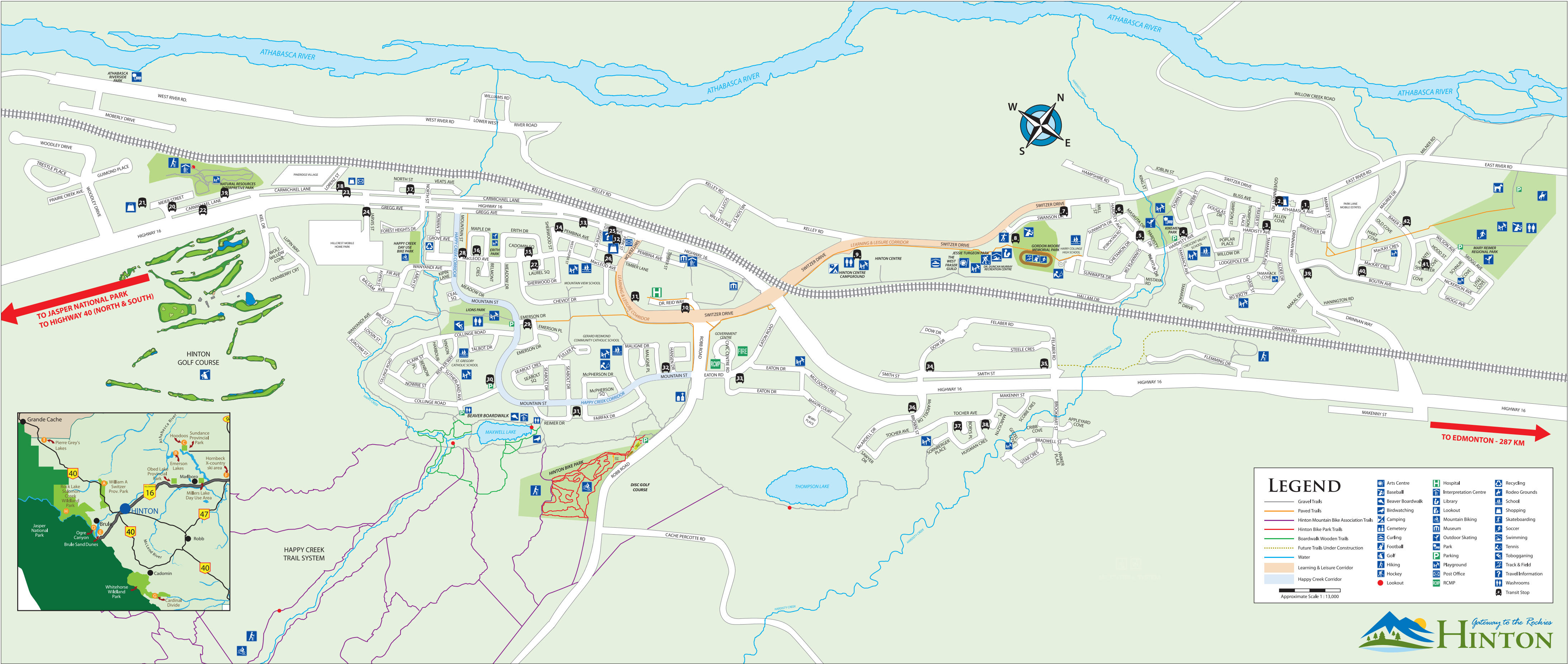
We offer a one-hour loop around town. Want more info? Call 780-865-6036 or visit [hinton.ca/transit](http://hinton.ca/transit)



**PLAN YOUR TRIP WITH  
GOOGLE MAPS!**

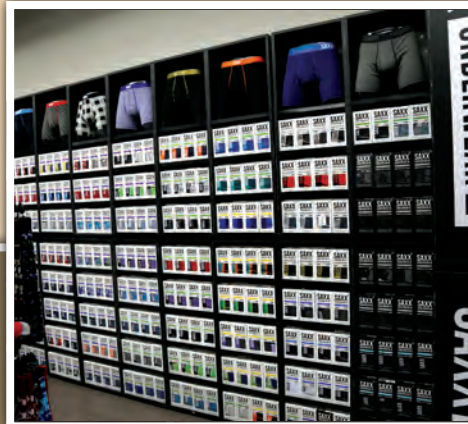








# sports experts®



The region's destination  
for sports lifestyle  
footwear, apparel, and  
accessories.



Located in Parks West Mall • [facebook.com/sportsexperts.hinton](https://facebook.com/sportsexperts.hinton) • 780.865.3085

Hinton & The Alberta Northern Rockies | #explorehinton | #hintonfirst | [www.explorehinton.org](http://www.explorehinton.org) | 877.446.8666 | 31

# KING DRUG

est. 1956



## The Soda Shoppe & Game Cafe

### KING CRAFT SODA

SODA POP

FLOATS

COOKIE DOUGH

SUNDAES

STEEPED TEA

MINI DONUTS

145 ATHABASCA AVE • 780-865-2645 • [KINGDRUG.CA](http://KINGDRUG.CA)

32 | 877.446.8666 | [www.explorehinton.org](http://www.explorehinton.org) | #explorehinton | #hintonfirst | Hinton & The Alberta Northern Rockies



# ATHABASCA LOOKOUT TRAIL



Breathtaking and indescribable ... the view from the Athabasca Lookout is straight out of a fairy tale story. A sea of wildflowers covers the 4 km ridge walk, dotted by giant boulders of sandstone.

The Joachim Valley gives way to the Rocky Mountain front ranges with views of Roche Miette, Brule Lake, and snow-capped mountains as far as the eye can see.

Bring binoculars to watch for hawks and eagles soaring high above the valley below. On sunny days, you might even catch a glimpse of a hang glider playing in the thermal drafts.

The 1 km uphill hike to the viewpoint starts at the parking lot and continues north along the ridge of the lookout and then begins to descend steeply into the Joachim Valley, where it eventually meets up with the Jarvis Lake Campground.

Climbers who enjoy bouldering should bring their rock shoes to scale countless sandstone boulders – complete with overhangs. In the winter, the trail is an ideal snowshoeing excursion. Visit [www.albertaparks.com](http://www.albertaparks.com) for more information.

## Largest beer cooler West of Edmonton.

We are on the highway ... so we are on the road to wherever you are headed.



**Mon-Sat**  
10am - 10pm

**Sunday**  
11am - 7pm

@CrossroadsLiquorOutlet

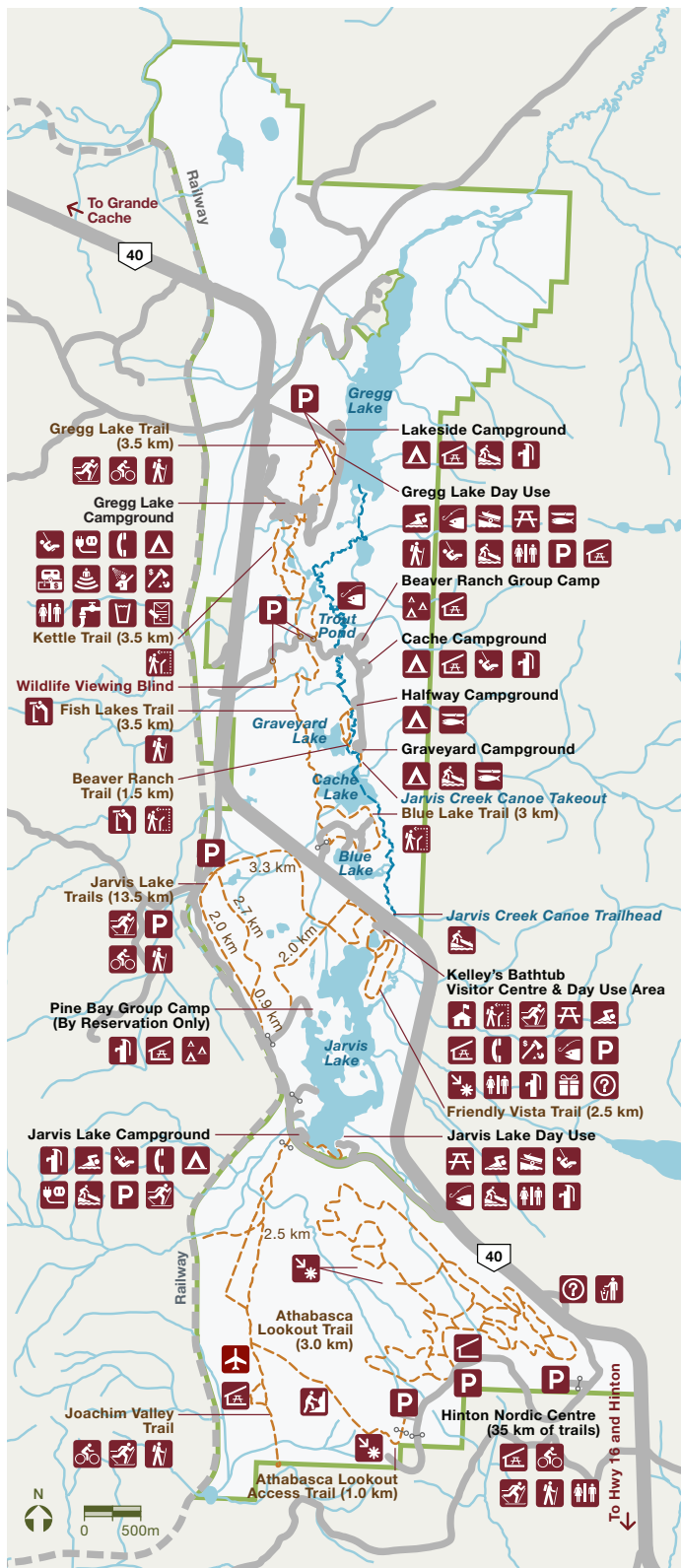


825.421.0070

#400 | Parks West Mall | next to Safeway



# WILLIAM A. SWITZER PROVINCIAL PARK



Located just 15 minutes away from Hinton on Hwy. 40 north, William A. Switzer Provincial Park is an uncrowded gem nestled in the Canadian foothills. (Item A on Page 32).

The park offers these summer adventures:

- camping and nature appreciation with vivid views of Canada's spectacular Rocky Mountains,
- multiple campgrounds, beach activities, visitor centre, interpretation programs,
- an interpretive canoe route along one of the most intact river valleys in Alberta's foothills,
- numerous forest trails for hiking, biking and cross-country skiing,
- excellent wildlife watching opportunities from easily-accessible viewing platforms and self-guided interpretive trails.
- a myriad of fun and informative weekend sessions that bring visitors in touch with the wildlife and plants around them, and provides some fun survival tips as well!

Switzer Park, as it's called by the locals, has year-round serviced and unserviced camping sites available, as well as seasonal self registration campsites.

To educate visitors about the area, Alberta Parks offers FREE seasonal interpretive programs and events, and features the seasonally staffed Switzer Visitor Centre and Gregg Lake booth.

For more information or to book a campsite, visit [www.albertaparks.ca/parks/central/william-a-switzer-pp](http://www.albertaparks.ca/parks/central/william-a-switzer-pp) or [www.albertaparks.ca](http://www.albertaparks.ca).







**MAXIMUM**  
OUTFITTERS

116 MARKET STREET  
HINTON, AB  
(780)-865-7679



FOOTWEAR - EQUIPMENT - APPAREL & MORE

**GEAR UP.  
GET OUT.**



**KNOWLEDGEABLE  
STAFF**



**BRANDS YOU  
KNOW & TRUST**



**1-ON-1 SHOE &  
PACK FITTINGS**



**HIKING**



**CAMPING**



**& BEYOND**

SHOP OUR TOP SELLERS ONLINE

[WWW.MAXIMUMOUTFITTERS.CA](http://WWW.MAXIMUMOUTFITTERS.CA)

**YETI**

**FJÄLL  
RAVEN**



**RED WING  
SHOES**

**MSR**

**THE  
NORTH  
FACE**



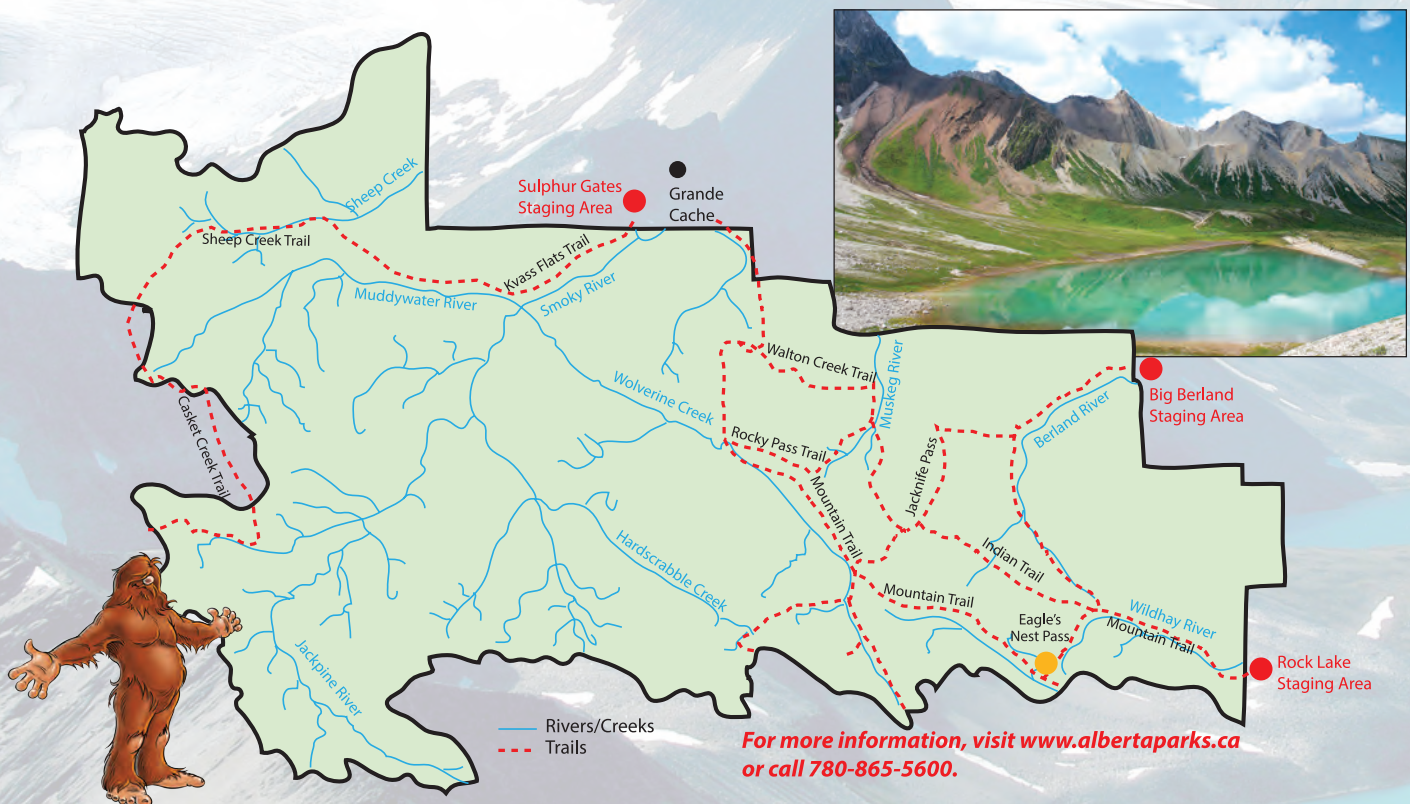
# WILLMORE WILDERNESS PARK

The largest wilderness area in Alberta, and the second largest provincially protected area, Willmore offers a unique back country experience in some of the last undisturbed range of many wildlife species in Alberta. It's 4,597 km<sup>2</sup> of rugged outdoor splendour. Campgrounds are located at all staging areas, and there are three main access points into Willmore: Rock Lake PP, Sulphur Gates PRA, and Big Berland PRA. Rock Lake and Sulphur Gates are also equipped with equestrian facilities.

750 km of trails created by the hard-working trappers, outfitters, surveyors and Indigenous peoples who used the area.

Grave sites and cabin ruins can be seen throughout the park. Visitors to Willmore should be experienced and well-equipped for a rugged back country trip. The park is open for horseback riding and hiking, but there is no vehicle access.

The high slopes and sheer cliffs of the alpine provide critical habitat for mountain goats and bighorn sheep. Sensitive species such as the harlequin duck and bull trout use the delicate wetlands of the sub-alpine. For more information, visit [www.albertaparks.ca/parks/central/willmore](http://www.albertaparks.ca/parks/central/willmore).



**EXPAND YOUR VISION  
GREENVIEW**

**Explore our  
MOUNTAIN PLAYGROUND!**

**Grande Cache Tourism & Interpretive Centre**  
Toll Free: 1-888-827-3790

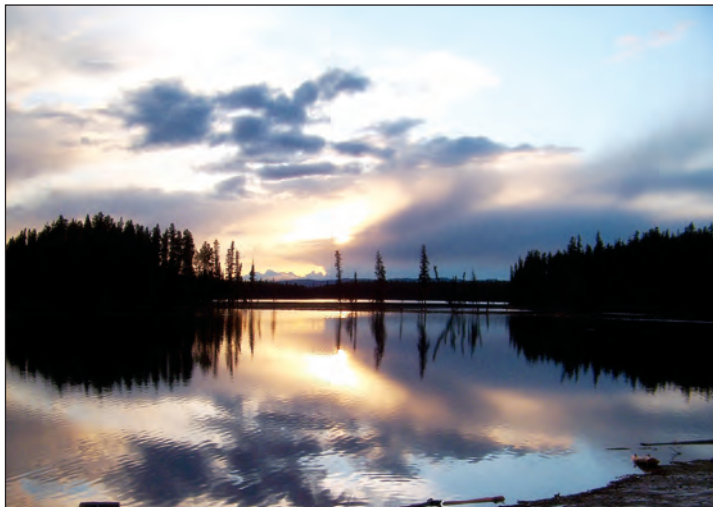
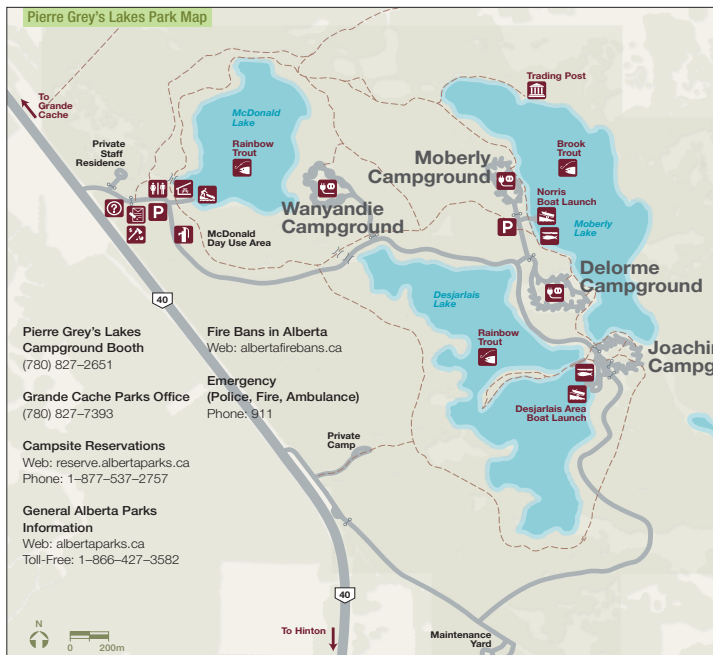
**Grande Cache Campground**  
780-827-2404  
Book online at [campreservations.ca](http://campreservations.ca)

[@GCTourismCentre](https://www.facebook.com/GCTourismCentre)  
[@tourismgreenview](https://www.instagram.com/tourismgreenview)

[EXPANDYOURVISION.ca](http://EXPANDYOURVISION.ca)  
[MDGREENVIEW.ab.ca](http://MDGREENVIEW.ab.ca)



# PIERRE GREY'S LAKES



Beaver, marten, mink, otter and wolf – the furs of these animals were the first resource to attract economic growth in Alberta's Northern Rockies. Pierre Gris (or Grey) was a Métis who ran a successful independent trading post near Grande Cache in the 1880s and 1890s. In the winters, Pierre would trade with trappers and hunters bringing in furs from the eastern slopes of the mountains. When spring came he would travel with pack horses to Lac Ste. Anne and Edmonton to sell the furs and purchase supplies. Pierre and his wife Anne both died during the flu epidemic of 1918. **See item I on Page 54 map.**

You can still see the remains of his trading post nestled among this beautiful group of five small lakes. Pierre Grey's Lakes Provincial Park is 120 km north of Hinton on Highway 40, near the scenic town of Grande Cache. The lakes have excellent fishing for rainbow trout and brook trout. More info is available at [www.albertaparks.ca/parks/central/pierre-greys-lakes-pp](http://www.albertaparks.ca/parks/central/pierre-greys-lakes-pp).

## ROCKY MOUNTAIN COLLECTIVE

Locally Owned & Operated



## LEGAL CANADIAN CANNABIS

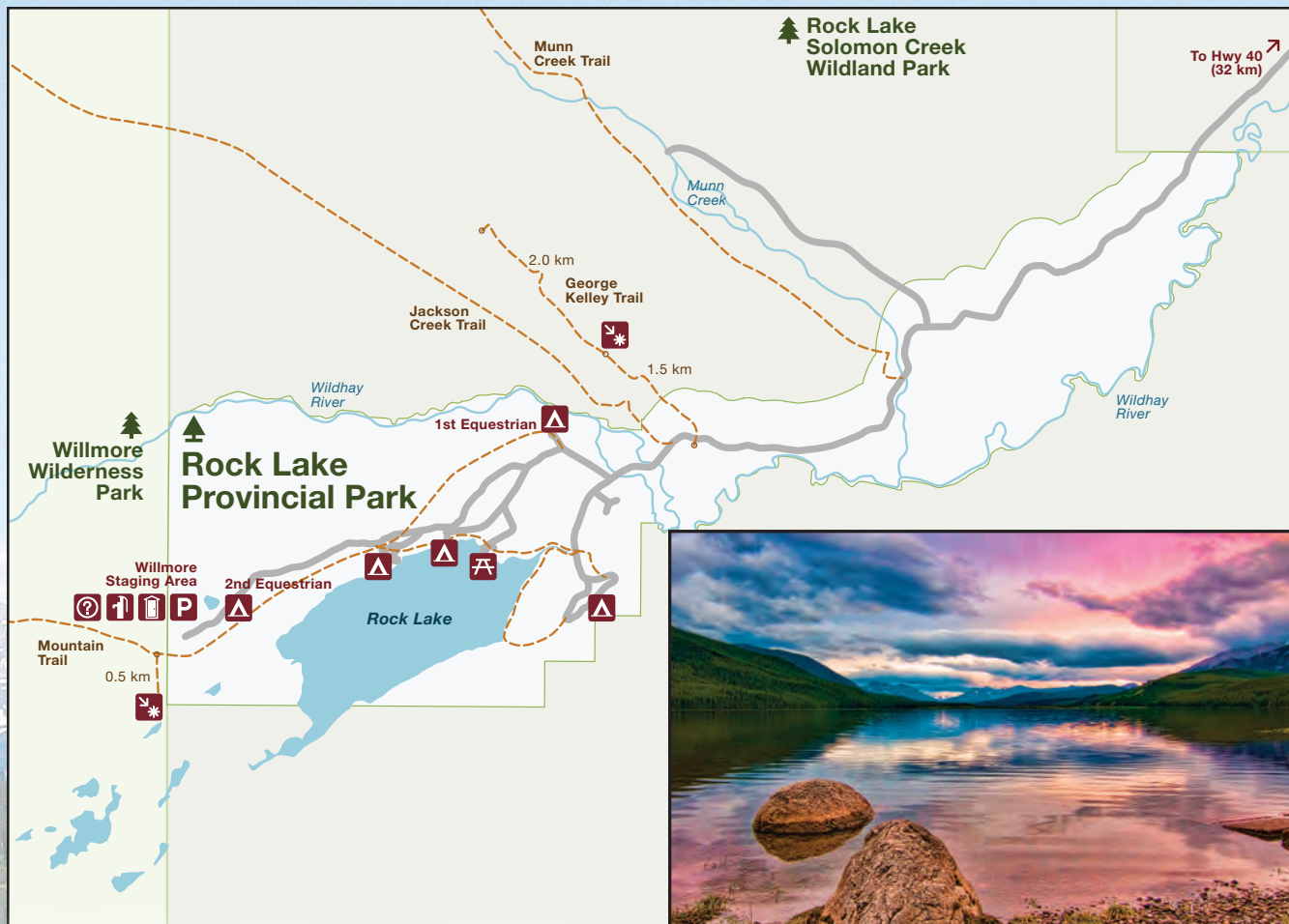
**Hinton**  
393 Drinnan Way  
780-865-4452

**Hinton**  
437 Gregg Ave  
780-865-1188

**Jasper**  
600 Patricia St.  
825-422-1119



# ROCK LAKE - SOLOMON CREEK



## Rock Lake Provincial Park

Nestled between the Willmore Wilderness Park and the Rock Lake-Solomon Creek Wildland Park, the Rock Lake Provincial Park offers reservable and non-reservable camping, boating and picnicking facilities and is a popular staging area for trips into the undeveloped wilderness of its neighbouring parks.

The hillsides and valleys that surround the lake provide excellent wildlife viewing opportunities for species such as elk, deer and bighorn sheep. The lake itself is a great place to fish for mountain whitefish and lake trout. Visit [www.albertaparks.ca/parks/central/rock-lake-pp](http://www.albertaparks.ca/parks/central/rock-lake-pp) for more.

## Rock Lake - Solomon Creek Wildland

One of the key features of Rock Lake-Solomon Creek Wildland (Item H on Page 26 map) can be seen from the Athabasca Lookout in Switzer Park: the dramatic elevation gain of 4,500 feet between Solomon Creek on the valley floor, and Boule Roche in the heights of the Rocky Mountains.

The change in elevation creates a diversity of habitats ranging from grassy meadows and shrub lands, to dense coniferous forests and mixed woods which rise up to meet the sub-alpine and alpine habitats found on the slopes and ridges at higher elevations.

The low valley at Rock Lake Provincial Park is a critical wildlife corridor into Willmore Wilderness and Jasper National Park. Elk, deer and bighorn sheep rely on the area's open grassy slopes for their winter range. The southern tip of the park has some interesting geological formations, including a waterfall at Ogre Canyon. Visit [www.albertaparks.ca/parks/central/rock-lake-solomon-creek-wpp](http://www.albertaparks.ca/parks/central/rock-lake-solomon-creek-wpp) for more.

For camping reservation details at these sites, see Page 21.



# BRULE

Brule is located approximately 20 km southwest of Hinton in the Alberta Coal Branch. The hamlet was initially developed as a gathering place by early explorers. It was later developed as a coal mining town in the early 1900s.

Remnants of a thriving mining community can still be found in the hills behind the town. Located northwest of Brule are the remains of a WW2 German POW Internment Camp and another historical site in Brule is the old train tunnel.

The Hamlet of Brule is described as “the prettiest place in the Country” and if you stop off and take in the views from the Mt. Solomon Lookout (an interpretive pull out on the side of Brule Road) you will understand why! Spectacular elevated views across Brule Lake with the awe-inspiring backdrop of the Northern Rockies Peaks to frame the golden sunset views.

For those looking for a hike – try your skills on Mt. Solomon (11km or 4 hour hike). A base level of fitness is required as it is a difficult hike and there are sections of climbing not recommended for beginners. Those interested in an easier hike can follow trail #9 which goes around the side of Mt. Solomon and detours around the steeper sections of trail. The trailhead can be found beginning at Black Cat Ranch.

Brule is the access point to the Ogre Canyon. A short approach hike of approximately 30 minutes from the lower parking (100m elevation gain) will lead you through spectacular scenery to the rim of the canyon, which is tucked into a small sliver of land between the first range of the Rockies and Brule Lake. vehicular access, beyond the gate, is very difficult (4x4 or Mountain Bike access ONLY). Visitors are asked to park at the Community Centre. The hike becomes quite difficult depending on how far deep into the canyon you go. This area is NOT for the novice hiker – be warned that the Canyon is dangerous, injuries and fatalities have occurred at this site.



Brule boasts the regions newest Mountain Bike Park. It's a new recreation facility for bike riders of all ages and skill levels. Brule Bike Park features a full compliment of features. Make sure you grab the family and check out this new adventure.

If you would like to know more about what Brule has to offer - camping, lodging, Trail rides, Guided Hikes, Historical Walks, Fishing or food, visit [www.yellowheadcounty.ab.ca](http://www.yellowheadcounty.ab.ca).







780-866-2330

[www.overlandermountainlodge.com](http://www.overlandermountainlodge.com)

f follow us on Facebook

Ask about our  
special event booking  
options for weddings,  
parties, and more.

## OVERLANDER MOUNTAIN LODGE

Nestled at the edge of the Jasper National Park, overlooking the majestic Rocky Mountains.

Enjoy our Fireside Lounge, our stunning Mountain View Patio or our Stone Peak Restaurant known for exceptional food and our Wine Spectator award winning wine list. Mountain view Guest rooms, kitchenettes and chalets available. Spend the day hiking our local trails, enjoying our recreation area or visiting our own onsite bee hives.

We look forward to welcoming you at the Overlander mountain lodge.



780-866-2330

[www.overlandermountainlodge.com](http://www.overlandermountainlodge.com)

Located at Overlander Mountain Lodge

## STONE PEAK RESTAURANT

The Stone Peak Restaurant allows each guest to partake in the best of dining experiences, in a casual and relaxed atmosphere. Our Chef is passionate about featuring progressive Canadian cuisine spiked with international flair. She sources the best local ingredients whenever possible and pays respect to those ingredients in the preparation and presentation of each dish.

Whether it be dinner or simply cocktails, our friendly and knowledgeable staff is pleased to assist in making your occasion a delightful and rewarding experience. Guest requests are always welcome and taken care of within the capabilities of the kitchen.



780-866-2330

[www.jaspereastcabins.com](http://www.jaspereastcabins.com)

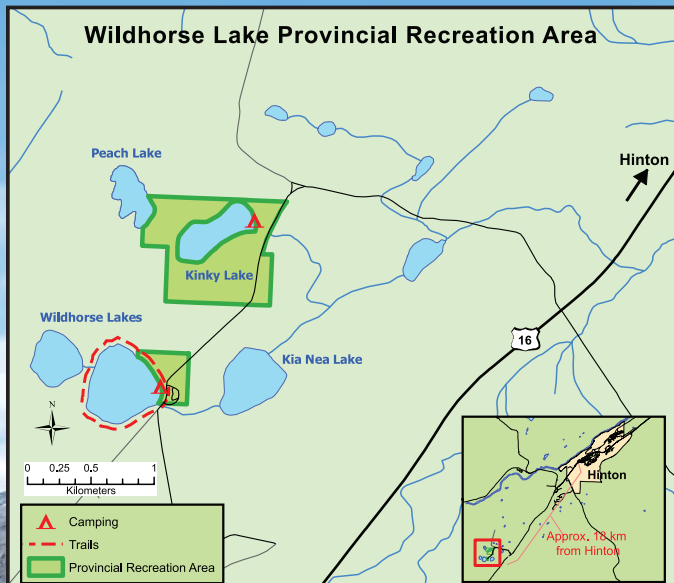
## JASPER EAST CABINS

Situated in the forest at the edge of Jasper National Park, this property is tucked in the rolling hills and is trumped by the beautiful Roche à Perdrix Mountain. Escape the crowds of the Jasper town site and retreat to your own mountain suite to relax and enjoy the true Rocky Mountain experience.

From single to three bedroom cabins, we have something available for every traveler. All suites are equipped with Queen-sized beds and luxurious duvets. Dark espresso wood finish and granite countertop kitchenettes include a 2-burner stove, mini fridge and microwave.



# WILDHORSE LAKES AND KINKY LAKE



Wildhorse & Kinky Lakes are located just 20 km west of town. The lakes were well known in the early settler days for being frequented by a large herd of wild horses (hence their name sake)

**Camping:** Wildhorse Lake campground contains 23 campsites well suited for tents and larger RV's and Kinky Lake offers 10 campsites. Amenities include water, firewood, picnic tables, toilets, beach, fish cleaning station, boat launch, fishing, ice fishing, canoeing & kayaking, mountain biking and hiking. If you would like to book a campsite here contact Fox Creek Development Association on 780- 865-2154

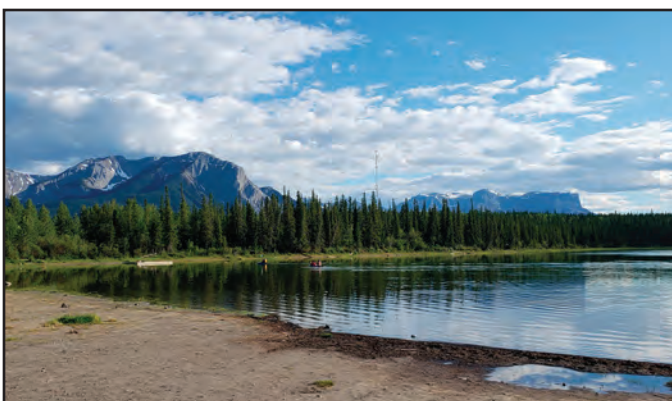
**Anglers:** Wildhorse Lake and Kinky Lake offer good Rainbow Trout and Brook Trout fishing, you'll need an Alberta fishing license to try your luck.

**Birdwatching and photography:** The lakes also attract a large variety of migrating waterfowl and other native bird life and fauna.

**Outdoor adventurers:** The lakes are restricted to paddling or electric motors only. Hikers and Mountain Bikers will find loop trails around Wildhorse and Kinky lakes. Jasper National Park is located 10 km west on the Yellowhead highway.

**The Brule Sand Dunes:** These 3 storey high sand dunes are impressive! In the 1900s the Grand Trunk Pacific Railway ran across these desert-like dunes, helping to connect the Rockies to Edmonton. Eventually the train route was relocated, due to the constant drifting sand of the dunes across the tracks. The Brule Sand Dunes are located west of Hinton off Highway 16 by turning into the Wildhorse Provincial Recreation Area on Kinky Lake road. Signage is posted along the way.

**OHV:** The non-vegetated sand dunes are on the southern shoreline side of Brule Lake (NOT accessible from the Hamlet of Brule) Turn north on the Kinky Lake road, the road turns east then take the first turn north then turn left at a Y junction. Continue to the Kiosk area. Access directly into the dunes is NOT recommended by road vehicles beyond the Kiosk points (OHVs, horseback or hiking in ONLY). The trails are not maintained so please exercise caution, be safety aware and make sure you have competent knowledge on vehicle rescue and recovery. Once at the Sand Dunes, please act responsibly and be aware that fatalities and injuries have occurred.





# HORSES, HEROES, HISTORY, AND HINTON

From Hinton's earliest history, horses have played an integral part in our town's development. Long before Hinton even existed, explorers leading pack trains loaded with supplies passed through the Athabasca valley looking for an overland route to the Pacific Ocean. Later, guides, outfitters, and their horses ferried miners, railroad builders, and settlers throughout the rough country of the eastern slopes of the Rocky Mountains in an ever-expanding circle of development.

Some of these early visitors and explorers decided to stay in the area and a few of them settled land to develop cattle and horse ranches. Several ranches were developed in and around what is now Hinton in the first part of the 20th century.

The Entrance Ranch, located just northwest of Hinton across the Athabasca River, was a major horse and cattle operation. The Entrance Ranch, though smaller than it was in its prime, still operates, offering lodging and unique ranch stay experiences to visitors in the Hinton area. It is also the host & home of the Wild Mountain Music Festival in July.

The Bar-F Ranch, located approximately 5km west of Hinton, was, at times, a cattle and horse ranch, a grain farm, and a dude ranch. Little remains of the Bar-F Ranch as it has mostly been split and sold off in parcels and is no longer a working ranch.

The King Ranch was located in what is now the valley residential area of Hinton, near Hardisty Creek.

The James Ranch was also located in what is now the valley residential area. It was originally a dairy farm and later a horse ranch.

The Circle M Ranch, located approximately 20km west of Hinton, was originally a dude ranch and still exists as a private residence, but is no longer a working ranch.

The Milner Ranch was located just east of Hinton's valley district on the Athabasca River valley flats and was a cattle and horse operation, later called the Reimer Ranch, it operated until the early 1990s when part of it was willed by Abe and Mary Reimer to the

\* This article was heavily sourced with permission from a piece published in The Hinton Voice on July 25, 2013, written by Albert Ostashek.

Town of Hinton on the condition that it be used for recreational purposes and that a portion of it was to be set aside for development of a rodeo grounds and equine facilities.

Hinton and region also boasts the wonderful métis expertise of the Vinson family in the Horseback Adventures group - they boast one of the oldest brands, "The Three Step" - registered and still used in the region, dating back to 1908. The Vinson family have been operating as a renowned backcountry pack trip adventure group for over 38 years and are an officially recognised Indigenous Canada Tourism Operator.

Finally - we must mention Old Entrance B & B, the site of an old station building. When it opened in 1914 it bore the name ENTRANCE. It was the last station prior to "entering" the Rockies on the transcontinental line. A small community grew at this location, boasting a post office, store, and restaurant. The station building sat on the 99' wide railway right-of-way until the railway line was eventually abandoned and the station building was sold in 1932.

This historic railway station building has been restored close to its original site and is the main house for Old Entrance Bed 'n Breakfast Cabins You can now visit and stay for a range of experiences including amazing trail rides, cabin stays and truly unique tepee camping.



Our teachers  
do not just educate,  
they **inspire**...

Find out more about our world-class public education programs at [gypsd.ca](http://gypsd.ca)

**Grande Yellowhead**  
Public School Division

**CRESCENT VALLEY**  
Junior Kindergarten to Grade 7  
Phone 780.865.2569

**ÉCOLE MOUNTAIN VIEW**  
Junior Kindergarten to Grade 7  
English and French Immersion  
Programming  
Phone 780.865.2628

**HARRY COLLINGE HIGH SCHOOL/  
THE LEARNING CONNECTION**  
Grade 8-12  
English and French Immersion  
Programming  
Off Campus and Learn-at-Home,  
Grades 1-12  
Phone 780.865.3714

**ALTERNATE LEARNING OPTIONS**  
Home Education Carra Aschenmeier  
[carraasch@gypsd.ca](mailto:carraasch@gypsd.ca)  
Phone 780.723.4471



# WHITEHORSE WILDLAND PARK

## And the Cadomin Area

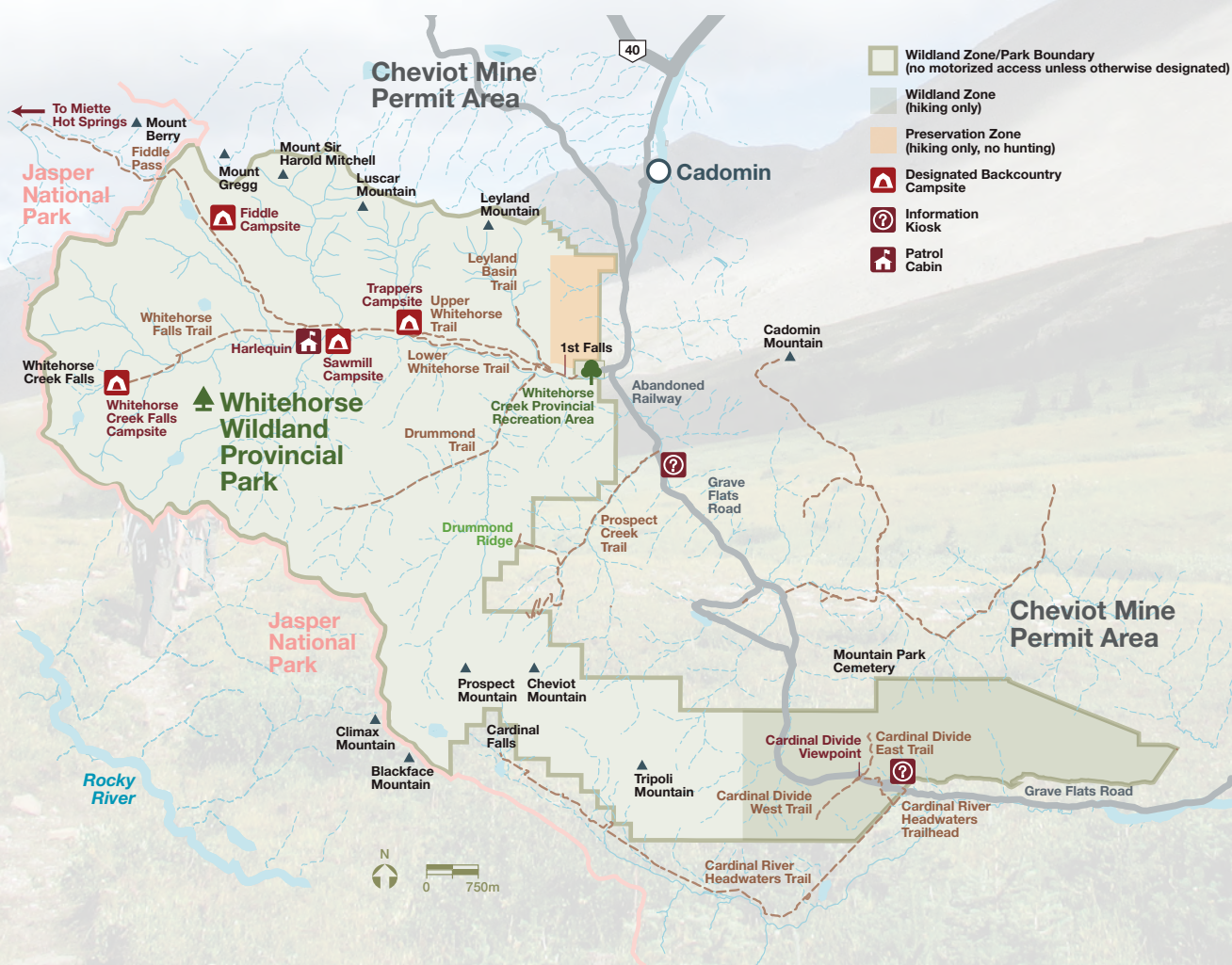
Whitehorse Wildland Park is located in the front ranges of the Rocky Mountain Natural Region. The majority of the park is located above the tree-line where extensive alpine meadows and sub-alpine slopes host extremely fragile soils and plants. More than 277 species of plants, of which 37 are considered to be provincially rare or unusual for the area, have been documented in the park. Following protection in 1998, park stewards began work to restore the damage caused to alpine soil and plants, by off-highway vehicles. There is a campground located at Whitehorse Creek.

At lower elevations the Whitehorse creek valley provides important habitat for sensitive species like grizzly bears and harlequin ducks. Elk, moose, mule deer, bighorn sheep, black bears, wolves, cougars, marmots, pika and more than 128 bird species can also be found in the park. The Cadomin Caves are essential to the little brown bat as it is one of only four known bat hibernacula (overwintering residences) in Alberta. The Caves are closed to cavers to help conserve the little brown bat population.

The fragile Cardinal Divide (**Item G on Page 54**) ridge area is accessible on foot only, but even the parking lot offers fantastic views. For more information, see **Page 53**.

Back country hiking and camping are popular activities. Be bear aware and leave no trace!

For more information, visit [www.albertaparks.ca](http://www.albertaparks.ca). For camping reservation information, see Page 21.



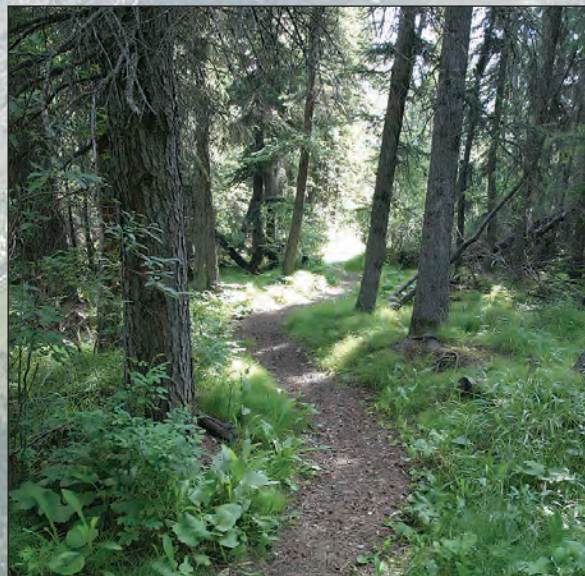


# ALBERTA FOREST SERVICE MUSEUM

With more than 38 million hectares of forest in Alberta, the forestry industry has played and continues to play an integral and vital role in protection and management of this resource. The Alberta Forest Service Museum focuses on the role and impact of forestry in the province and reflects back on the work performed by the early rangers and features many interesting artifacts and displays documenting forestry's storied history.

The museum is free of charge. It is located at the Hinton Training Centre (1176 Switzer Drive) and visitors are invited to explore the 1.1 kilometre interpretive trail.

Please call the Hinton Training Centre at 780-865-8200 for additional information.



## Tandoori Kona

Fine Indian Cuisine



- Traditional Indian Cuisine
- Fully Licensed
- No reservations
- Family Restaurant

Guests of Quality Inn receive discounts on food at Tandoori Kona.



## Quality Inn & Suites

### Welcome!

Room to stay  
Place to eat

Close to shopping, golf  
and restaurants

Complimentary hot  
breakfast

Indoor pool & Hot Tub  
Complimentary Fitness  
Rooms with Balcony View  
Short Drive to Jasper



782 Carmichael Lane, Highway 16 587.765.0246 782 Carmichael Lane, Highway 16 587.865.5255



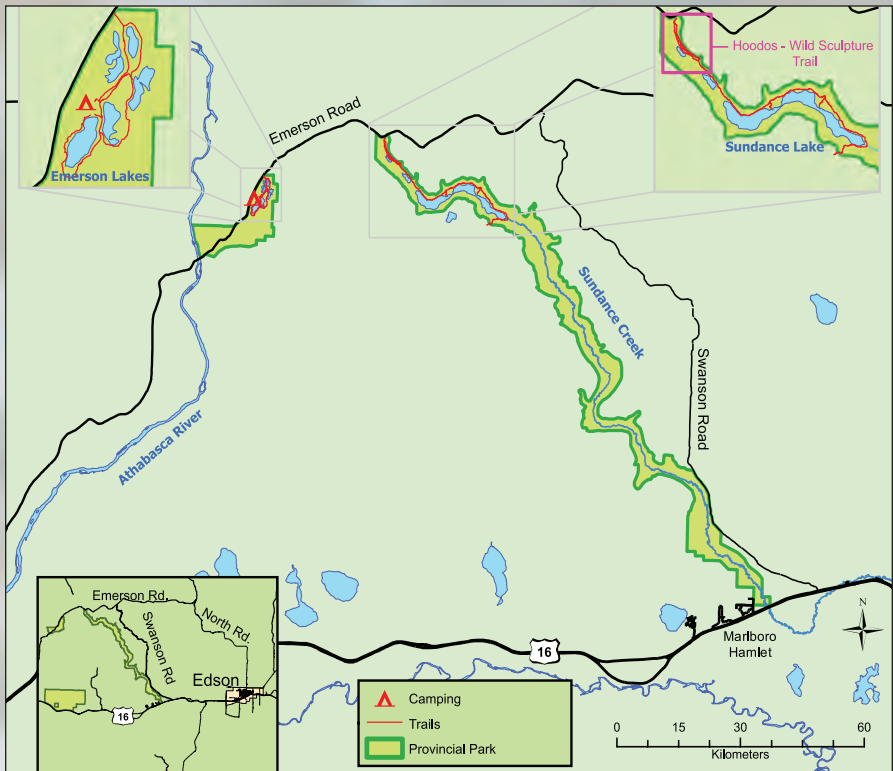
# SUNDANCE PROVINCIAL PARK

## The Hoodoos

Visitors can take the Wild Sculpture Trail past the hoodoos – formations of sandstone that have been naturally sculpted by wind through the ages.

The trail is around 9 kilometres in length one way and can easily be hiked in a day, although there are designated camping spots for those wishing to stay overnight in this healthy forest with abundant wildlife and waterfowl.

Those taking the trek will also enjoy spectacular skyline views of the Sundance Valley in the Sundance Provincial Park. Near item C on Page 54 map. For more information, see [www.albertaparks.ca/parks/central/sundance-pp](http://www.albertaparks.ca/parks/central/sundance-pp).



## Emerson Lakes

This collection of five clear blue lakes is another gem found in Sundance Provincial Park. The trail system, recommended for people with moderate hiking ability, incorporates three loops that total eight kilometres in length around four of the lakes.

Suitable for day hikes, visitors to the trails will be witness to these pristine lakes left by glacial melting, as well as the high sediment deposits – called eskers – that separate the bodies of water. Item B on Page 54 map.

For camping reservation information, visit Page 21.





# JASPER

Jasper National Park, a UNESCO World Heritage Site with a rich history, has its park gates only 15 minutes west of Hinton and the Municipality of Jasper a mere 75 km away. The scenic drive from Hinton usually features a wide variety of wildlife viewing opportunities, with big horn sheep dotting the roadside, or sometimes even a mama bear and her cubs. There are a number of historical and interpretive sites, as well hiking expeditions that range from one hour to multiple days. Check out the world-famous Maligne Lake and take a boat tour, or rent a kayak or canoe and cruise this beautiful waterway at your own speed!



**Miette  
Hot Springs**  
Jasper National Park

**Parc national Jasper**  
Sources thermales  
Miette

## Take a breather!

Miette Road, 51 km from Hinton.  
Hours and information: [pc.gc.ca/hotsprings](http://pc.gc.ca/hotsprings)  
1-800-767-1611

## Offrez-vous un répit!

Route Miette, à 51 km de Hinton.  
Heures d'ouverture et renseignements :  
[pc.gc.ca/sourcesthermales](http://pc.gc.ca/sourcesthermales)  
1-800-767-1611

Hours may change.  
Les heures d'ouverture pourraient changer.



Parks  
Canada

Parcs  
Canada

Canada



# DISC GOLF *A fun activity for the whole family!*



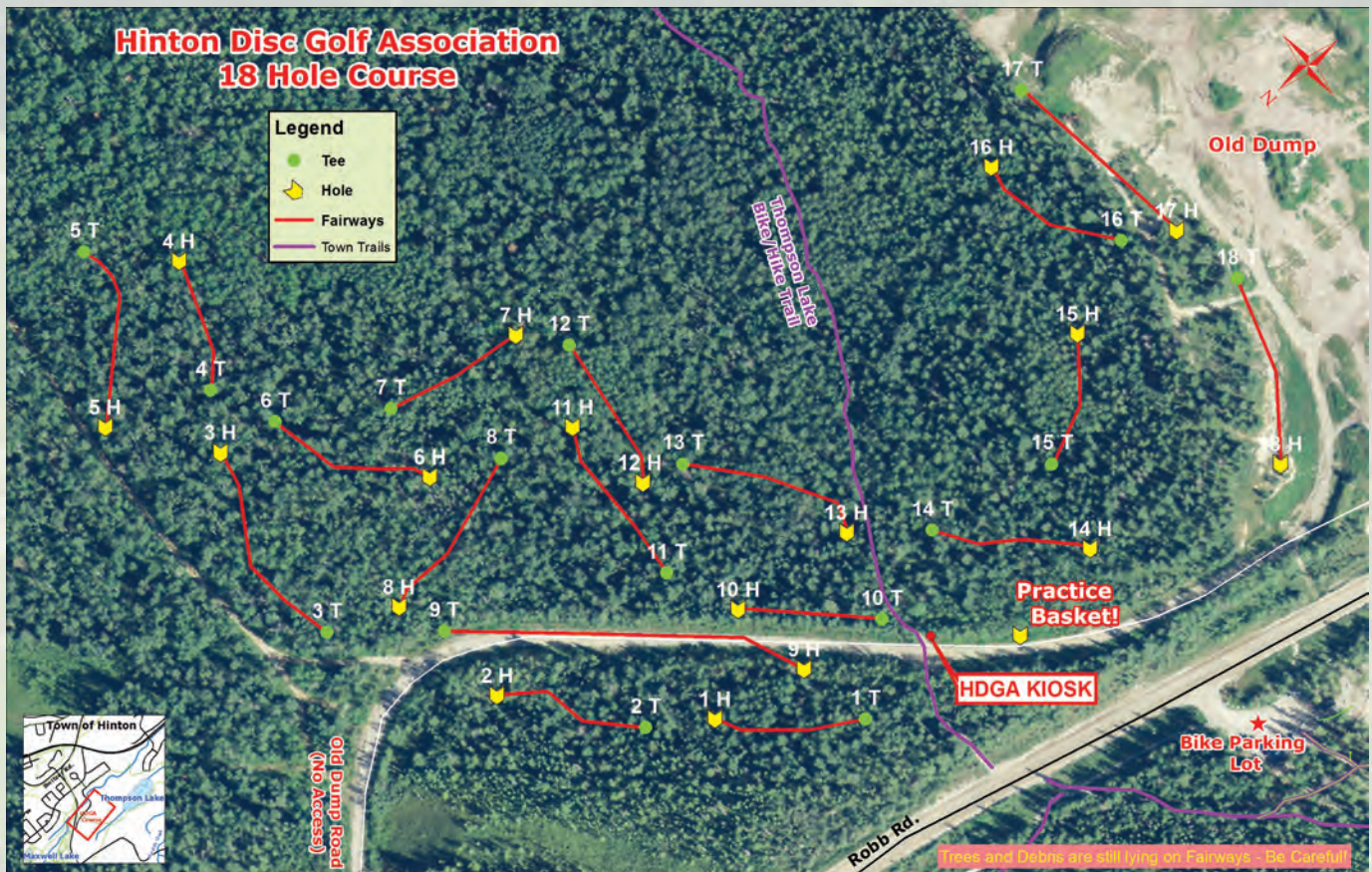
One of Hinton's newest attractions is the 18-Hole Hinton Disc Golf Course, opened in 2017 by the Hinton Disc Golf Association (HDGA). Disc golf is simple to learn, only requires an inexpensive disc to participate, and the course is free to play. A person can play nine holes in under an hour, but it varies depending on skill level and number of players. Disc golf is a great activity for families and anyone looking for an excuse to get outdoors.

Disc golf is played like traditional golf, but with flying discs instead of balls and clubs. One point (stroke) is counted each time the disc is thrown. The goal is to play each hole from tee off to metal basket in the fewest strokes possible.

The course is located across Robb Road from the HMBA Bike Park parking lot, the best place to park your vehicle. Follow the walking path north along Robb Road until you can cross the road on the Town Trail. The HDGA sign board is about 50 metres east of Robb Road, where you'll find a map of the course and more info.

Disc golfers recommend playing with specially designed "disc golf discs", but beginners can bring their own Frisbees to get started. The HDGA has club discs that are available to rent for a refundable deposit at the Hinton Visitors Information Centre. The course is situated in the forest, so it is highly recommended that you wear sturdy footwear, hiking clothes, and bug spray. Bring bear spray and noisemakers and play in groups to avoid an animal encounter.

More information can be found at [www.hintondiscgolf.com](http://www.hintondiscgolf.com) or on the HDGA Facebook Page.





# OFF ROAD ADVENTURES

Whether by machine or muscle power, there are options for getting away from it all, including the road.

## The Big Machine

It's important to remind off-highway vehicle (OHV) users that their presence can have an impact on the natural landscape, vegetation, wildlife and waterways. Before you head out, please remember:

- Stay on trail and share it with other users.



- Yield to non-motorized trail users.
- Travel only where permitted.
- Wash your vehicle between uses to prevent weed transfer between areas.
- Wash your machines in a proper facility, not a creek, river or lake.
- Choose routes with a hard and durable surface.
- Avoid spinning your tires or skidding.

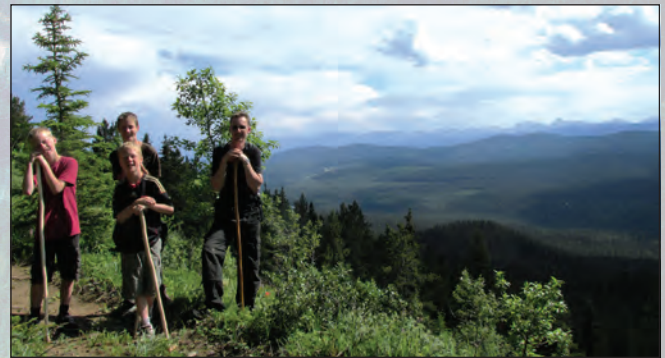


- Ride on dry trails and avoid riding after heavy rainfall or in wet areas.
- Use designated bridges and water crossings.
- OHVs on public land require a functional muffler and spark arrestor to help prevent wildfires.

## The Bighorn Trail

The Bighorn Trail offers a rugged hike, mountain bike, or horseback ride through spectacularly beautiful Rocky Mountain scenery.

Gregg Cabin at the south trail head also makes a good starting or ending point for hiking the Bighorn Trail. The picnic shelter has a wood stove good for heating up food or just warming up.



### North Trail Head

- Head south from town on Robb Road.
- Go 3.5 kilometres, and then branch off the Robb Road onto the Cold Creek Road.
- The trail head turnoff is 500 metres on the left.

### South Trail Head

- Go south on Hwy 40 for 20.5 km.
- Turn left onto the Gregg River Road and follow it for 7.5 km, where, on the right side of the road will be the Gregg Cabin Day Use Area.
- Go 2.5 km past the Gregg Cabin Recreation Area to reach the south trail head.

## HOME OF THE DEAL MAKERS

WE DO BUSINESS YOUR WAY



NO APPOINTMENT QUICK LUBE

186 Tocher Avenue • Hinton • [www.bigrockdodge.com](http://www.bigrockdodge.com) • 1-866-759-2333 | 780-865-3010

Hinton & The Alberta Northern Rockies | #explorehinton | #hintonfirst | [www.explorehinton.org](http://www.explorehinton.org) | 877.446.8666 | 49



# REELING THEM IN

## Fishing in the Alberta Northern Rockies

### Recreational Fishing

Hinton has a remarkable variety of fishing on offer to the avid angler! There is no shortage of lakes to choose from when looking to land that “brag” catch. Of the 38 lakes nearby, locals prefer Jarvis Lake, Blue Lake, Cache Lake, Graveyard Lake, Kinky Lake, Wildhorse Lake, Obed Lake, Petite Lake and Rock Lake. You will require an Alberta fishing license – visit [www.albertaregulations](http://www.albertaregulations) for more information.

For those anglers preferring to fish in rivers, creeks and streams, there are about 167 angling opportunities within 50 km. Some of these rivers include Gregg River, Athabasca River, McLeod River, Berland River, Wildhay River and Jarvis Creek.

Hinton offers a variety of fish to catch. Pick up the Fishing Regulations when you purchase your fishing license and try to catch any of the following fish Hinton waterways boast – Arctic grayling, bull trout, burbot, brook trout, lake trout, lake whitefish, pike, rainbow trout and Rocky Mountain whitefish..



### Winter Fishing

During the winter months, ice fishing is great way to enjoy the outdoors. Make sure the ice is thick and remember that safety comes first. Around Hinton there are ice fishing opportunities at: Gregg Lake, Jarvis Lake, Kinky Lake, Wildhorse Lake.



### Guided Fishing Tours

#### Guided Tours and Fishing Licences

Do you need some expert guidance and equipment? Not a problem, Hinton has you covered! Visit the local Hinton Visitor Information Centre for more information on where you can buy your fishing equipment or book a guided fishing tour with one of our local operators.

Heading into the National Park to fish? If so you'll need to have a National Park fishing licence, which can be purchased at the Hinton Visitor Information Centre.



# Book your stay today.

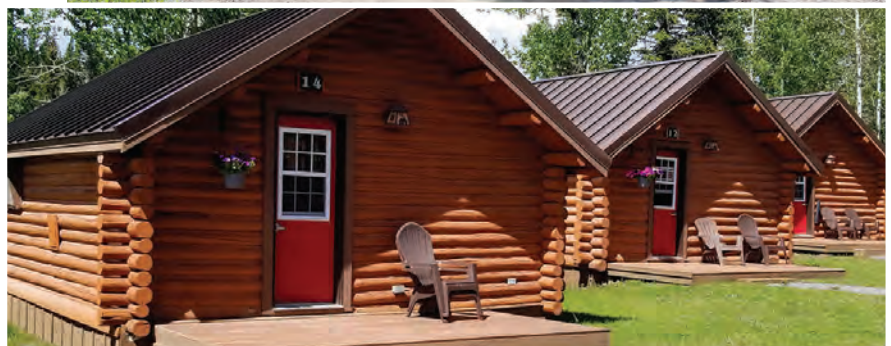
Book online: [www.jaspergates.ca](http://www.jaspergates.ca)  
Email: [reservations@jaspergates.ca](mailto:reservations@jaspergates.ca)  
Toll Free: 1(855)780-3737  
10 minutes West of Hinton  
2 minutes from Folding Mountain Brewery  
2 minutes from Folding Mountain Village



17 acres of land nestled at the base of Folding Mountain in the Rocky Mountains. 100 serviced campsites, ground firepits, heritage log cabins, newly renovated motel units, and on-site convenience store with movie rentals.



RV rental units available for visitors who don't have an RV but want to experience the "RV Lifestyle." They are already set up with everything you will need in your very own landscaped, full-service site. Please call for details or to book.







## FOLDING MOUNTAIN BREWING

Choose from a large selection of our craft beer and enjoy a delicious meal from our kitchen while taking in the view of the beautiful Rockies from the FMB taproom and patio!



Pet friendly patio.  
Located along Highway 16, 10 minutes west of Hinton, at the edge of the East Jasper National Park Gates.

*Venture FORTH*



[foldingmountain.com](http://foldingmountain.com)



# RENTALS

## SALES | SERVICE | PARTS



**GRIFFITHSFORD**  
HINTON, ALBERTA

[info@griffithsford.com](mailto:info@griffithsford.com)  
**HWY 16 Hinton**  
[www.griffithsford.com](http://www.griffithsford.com)  
**780-865-3354**



# CADOMIN

## From Hinton to the Cardinal Divide

Approximately 10 minutes west of Hinton, there is a sign that indicates Highway 40 South and the road to Cadomin. This travel route is well known for wildlife spotting – Grizzly, Black Bear, Moose, Elk, Deer, Wolves and Cougars. You will find herds of Elk and Big Horn sheep right along the side of the road on the mining land of Cardinal River Operations – Teck Coal Limited, which includes the Luscar and Cheviot mines (42 km south of Hinton). The paved road ends, but a wide gravel road will take you the rest of the way to the hamlet of Cadomin.

Cadomin is located 50 km down Highway 40 South. It is known for its mining history and there are some great mining displays right in the centre of town. The name – Cadomin – is an acronym of “Canadian Dominion Mining.” Don’t forget to check out Cadomin’s own little Beaver Pond... it’s a great place to pull up and stretch the legs and take in Cadomin’s beautiful mountain views! Cell service has recently been brought to the area.

Continue out of town and you will come across the Whitehorse Creek campground and entrance to the Whitehorse Wildlands Provincial Park – see Page 44 for more information.

Another 10 km will bring you to the Ghost Town of Mountain Park, once a bustling coal mining town in the early 1900s, reaching its peak with a population of 1,000 people. It was hard hit by the great coal depression after World War II and ceased operations by 1950. All that remains of this thriving community is its cemetery which is lovingly maintained, to this day, by remaining residents still in the area. Please be respectful and careful if visiting this serene landmark.

Travel another 10 km down the road and you will finish your journey with a real natural treat – The Cardinal Divide Viewpoint. The Cardinal Divide is approximately 20 km from Cadomin along the Grave Flats Road. At Mountain Park the haul road veers right, while the Grave Flats Road crosses the McLeod River twice, and then begins its ascent to the Cardinal Divide. It’s worth the drive! Road conditions are weather dependent. The Cardinal Divide area is adjacent to the eastern side of Jasper National Park. It spans the continental divide; one side drains to the Arctic Ocean and the other to the Hudson’s Bay. High elevations of the Cardinal Divide are thought to have been a ‘nunatak,’ an area that remained ice-free during the last period of glaciation. This attribute would explain the diverse and unique population of plant and insect species found here. There are spectacular mountain views from the viewpoint, which is auto-accessible. There are two trails – Cardinal Divide East Trail and Cardinal Divide West Trail which start from the parking. Also available to the visiting public are Day use picnic sites and pit/vault toilets. This area is also well known for geocaching and spotting Marmots.

If you would like to know more about the history and sites in the area, visit the Hinton Visitor Information Centre to get your Coal Tour Map.



**FIND ALL THE SASQUATCH HIDING ON THE PAGES THROUGHOUT THIS GUIDE  
AND WIN SOME COOL SASKY DA SASQUATCH PRIZES!**

**WIN T-SHIRTS – BAGS – HIKING GEAR AND MORE!**

You can find Sasky the Sasquatch hiding on different pages trying his hardest to make sure he doesn’t leave a trace. And just like the elusive Sasquatch, you should always remember to not leave a trace when you’re out in the great outdoors. Help minimize the environmental footprint of outdoor recreation.

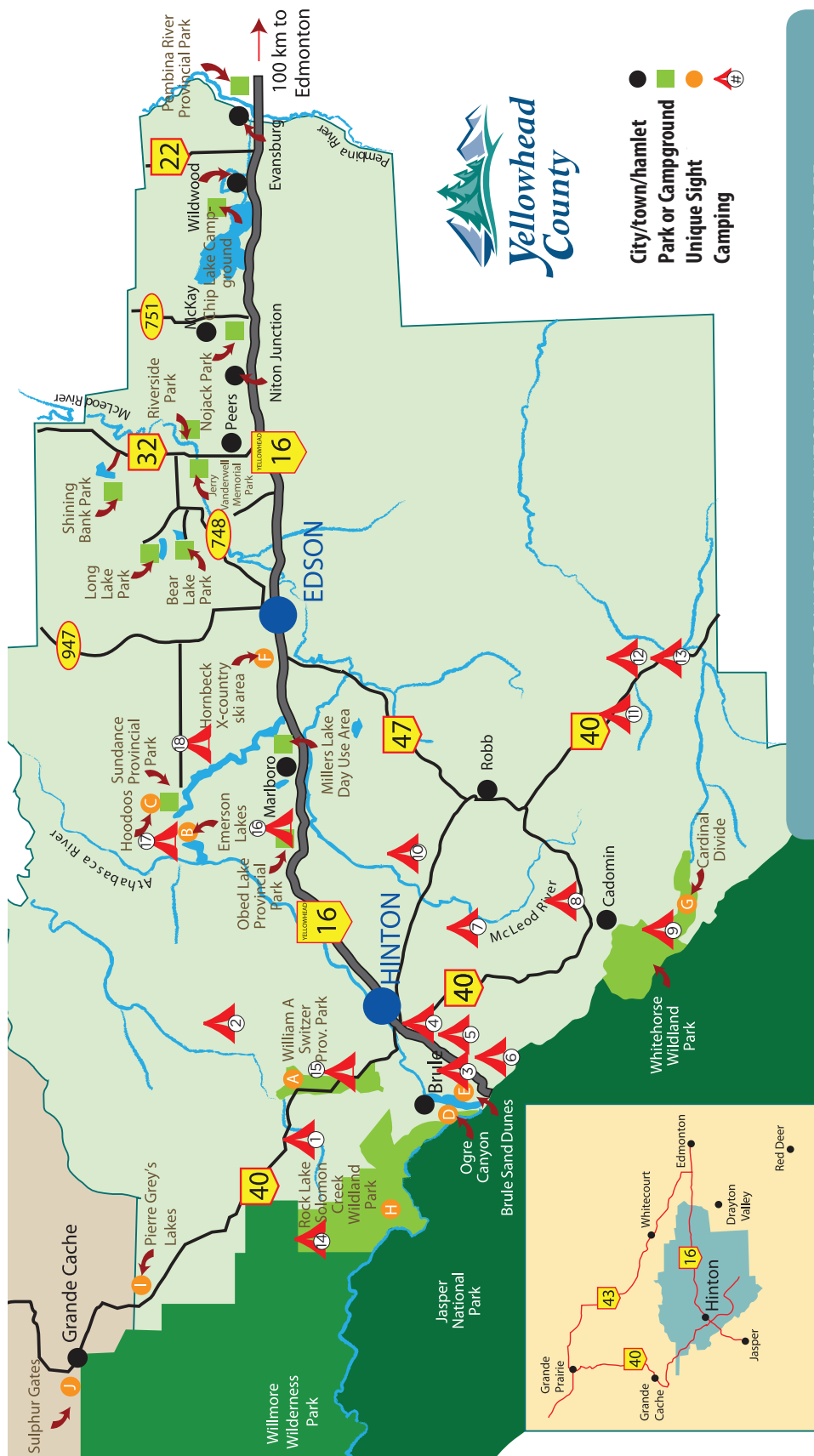
Go to [www.WelcometoOurBackyard.ca](http://www.WelcometoOurBackyard.ca) or find [@SaskyDaSasquatch](https://www.facebook.com/SaskyDaSasquatch) on Facebook to enter. Just list all the places you found him in the guide and you’ll be entered to win Sasky Da Sasquatch prizes! Or you can mail in the list to enter.

**Sasquatch & Partners ask that you tread carefully while enjoying the great outdoors.**

The “Welcome to Our Backyard” campaign is brought to you the municipalities along the Alberta Northern Rockies Eastern Slopes and is a reminder that keeping a clean and well looked after recreation area will ensure safe and memorable experiences for many more generations.



# ALBERTA NORTHERN ROCKIES and Yellowhead County



FOR CAMPGROUND INFORMATION, GO TO PAGE 55

Hinton is blessed with a beautiful backyard that encompasses neighbouring parts of Yellowhead County and the Alberta Northern Rockies.

The Alberta Northern Rockies encompass the massive system of provincial parks that neighbour Hinton to the south and north, as well as Jasper National Park to the west. Highlighted by an endless supply of trails, alpine terrain, forests and waterways - the Alberta Northern Rockies also boast a vast swath of untapped, pristine wilderness.

Nearby communities of Cadomin, Brule, Robb and Obed fall within Yellowhead County boundaries. These communities are rich in history, blessed with natural beauty, and act as gateways to the hiking, biking, camping, fishing, hunting, snowmobiling and quadding adventures that lay beyond.

## UNIQUE SIGHTS

- |                                       |  |
|---------------------------------------|--|
| A. William A. Switzer Provincial Park | F. Hornbeck X-Country Ski Area           |
| B. Emerson Lakes                      | G. Cardinal Divide                       |
| C. Hoodoos (Wild Sculpture Trail)     | H. Rock Lake Solomon Creek Wildland Park |
| D. Ogre Canyon                        | I. Pierre Grey's Lakes                   |
| E. Brule Sand Dunes                   | J. Sulphur Gates                         |



# ACCOMMODATIONS & ADVENTURES

## HOTELS & INNS

ATHABASCA VALLEY INN & SUITES  
780-865-2241 • 124 Athabasca Ave.  
www.athabascavalleyinnandsuites.com

BCMINNS AND RV PARK  
780-865-5099 • 386 Smith Street  
www.bestcdn.com

BEST WESTERN PLUS\*\*  
780-817-7000 • 340 Smith Street  
www.bestwestern.com/ca/  
PlusHintonInnandSuites

BIG HORN MOTEL  
780-865-1555 • 485 Gregg Avenue

CRESTWOOD HOTEL  
780-865-4001 • 678 Carmichael Lane  
www.crestwoodhotel.com

DAYS INN HINTON  
780-817-1960 • 358 Smith Street  
www.daysinnhinton.ca

ECONOLOGUE INN & SUITES  
780-817-2000 • 571 Gregg Avenue  
www.econologuehinton.com

HINTON LODGE  
1-888-544-6866 • 752 Carmichael Lane  
www.hintonlodge.ca

HINTON HIGHWAY INN  
780-740-3557 • 257 Gregg Avenue  
www.hintonhighwayinn.ca

HOLIDAY INN EXPRESS HOTEL & SUITES HINTON  
780-865-2048 • 462 Smith Street  
www.hiexpress.com

HOLIDAY INN HINTON  
780-865-3321 • 393 Gregg Avenue  
www.holidayinn.com

LAKEVIEW INN & SUITES  
780-865-2575 • 500 Smith Street  
www.lakeviewhotels.com

PINES MOTEL  
780-865-2624 • 709 Gregg Avenue  
www.pines-motel.com

QUALITY INN  
780-865-5255 • 782 Carmichael Lane

RAMADA HOTEL  
780-865-4755 • 149 Woodley Drive  
www.wyndhamhotels.com/ramada

SUPER 8 MOTEL - HINTON  
780-817-2228 • 284 Smith Street  
www.super8hinton.com

TARA VISTA INN  
780-865-3391 • 425 Gregg Avenue

TIMBERLAND HOTEL  
780-865-2231 • 114 Park Street

TWIN PINE INN & SUITES  
780-865-2281 • 595 Gregg Avenue  
www.twinpinemotorinn.com

WHITE WOLF INN  
780-865-7777 • 828 Carmichael Lane

## \*ELECTRIC CHARGING STATIONS

## CABINS & OTHER

BLACK CAT GUEST RANCH  
780-865-3084 • Hwy 40N to Brule  
www.blackcatguestranch.ca

COUGAR CREEK  
CABINS & CAMPGROUND  
780-865-4481 • 11km E of Hinton  
www.cougarcreekcabinsandrv.ca

ENTRANCE RANCH  
780-865-7549 • Hwy 40N  
www.entrancerranch.com

JASPER EAST CABINS  
780-866-2330 • Hwy 16 W  
www.overlandermountainlodge.com/  
jasper-park-cabins

JASPER GATES  
780-866-3737 • 10 Km West of Hinton  
www.jaspergates.ca

OLD ENTRANCE B'N B CABINS & TEEPEE  
780-865-4760 • 26118 Old Entrance Road  
www.oldentrance.ab.ca

## CABINS & OTHER

OVERLANDER MOUNTAIN LODGE  
780-866-2330 • 15km west of Hinton  
www.overlandermountainlodge.com

ROCK LAKE LODGE  
1-587-772-1634 • Rock Lake Provincial Park  
info@rocklakelodge.ca

ROCKY MOUNTAIN ESCAPE  
780-865-0124 • 40km N of Hinton on  
Hwy 40, then 29.5km W on Rock Lake Road  
www.ecolodge.com

## BED & BREAKFASTS

ASPEN WHISPERS B&B  
780-865-5251 • 276 Collinge Road  
www.bbcana.com/14530.html

BAR F RANCH HOUSE  
780-865-8885

BLUE DIAMOND MOUNTAIN INN  
780-865-4895 • 4701 Mountain Road, Brule  
www.bluediamondbb.com

BRULE B&B  
780-865-4417 • 4901 Centre Street, Brule

FLYING DOG B&B  
780-865-4148 • 240 Woodley Drive  
www.flyingdogbb.com

HINTON LOG INN B&B  
252 Woodley Dr. 780-817-1123

MAXWELL LAKE B&B  
780-865-7133 • 354 Collinge Road  
www.jasper.ca/maxwellbnb/

MOUNTAIN VISTA B&B  
780-865-2470 • #1217 Mountain View Estates  
www.bbcana.com/9211.html

ROCKY MOUNTAINVIEW B&B  
www.rockymountainviewbnb.com

1-888-978-2337

SUITE DREAMS B&B  
780-865-8855 • Lot#2 Maskuta Estates  
www.suitedream.com

WOLF DEN SUITE  
780-817-2562 • 108 Moberly Drive  
www.wolfdensuite.com

WYNDSWEEP B&B  
780-866-3950 • #12 Folding Mountain Village  
www.wyndswep.com

## CAMPGROUNDS

BCMINNS AND RV PARK • 780-865-5099  
386 Smith Street • www.bestcdn.com

BIG BERLAND • 780-827-7393/780-865-8395  
70km NW of Hinton on Hwy40 • www.albertaparks.ca

CACHE LAKE • 780-865-5600  
William A. Switzer Prov. Park - 30km NW of  
Hinton on Hwy40 • www.albertaparks.ca

COUGAR CREEK CABINS & CAMPGROUND  
780-865-4481 • 11km E of Hinton  
www.cougarcreekcabinsandrv.ca

EMERSON LAKES • 780-865-2154  
Sundance Prov. Park • www.westfraser.com/  
responsibility/recreation/frma/campgrounds

FAIRFAX LAKE • 780-865-2154  
113km S of Hinton on Hwy40  
www.westfraser.com/responsibility/recreation/  
frma/campgrounds

FICKLE LAKE • 780-723-0738  
40 km SW of Edson on Hwy 47  
www.albertaparks.ca

GATEWAY RV PARK • 780-865-1873  
685 Gregg Avenue

GRAVEYARD/HALFWAY • 780-865-5600  
William A. Switzer Provincial Park, 30km NW  
of Hinton on Hwy40 • www.albertaparks.ca

GREGG LAKE • 780-865-5152  
William A. Switzer Prov. Park - 30km NW of  
Hinton on Hwy40 • www.albertaparks.ca

GREGG CABIN • 780-865-2154  
20km S of Hinton on Hwy40, then 7.4km SE  
on Gregg River Road (OHV - Quadding)  
www.westfraser.com/responsibility/  
recreation/frma/campgrounds

HINTON CENTRE • 780-865-0876  
Switzer Drive  
HINTON/JASPER KOA • 888-562-4714  
4km W of Hinton on Hwy16 • www.  
koa.com

JARVIS LAKE • 780-865-5600  
William A. Switzer Prov. Park - 20km  
NW of Hinton on Hwy40 • www.  
albertaparks.ca

KINKY LAKE • 780-866-2154  
25km W of Hinton off Hwy16  
LOVETT RIVER • 780-865-2154  
96km S of Hinton on Hwy40  
www.westfraser.com/responsibility/  
recreation/frma/campgrounds

MASKUTA CREEK • 780-865-0876  
16km W of Hinton on Hwy 16  
MCLEOD RIVER • 780-865-2154  
28km SE of Hinton on Robb Road  
www.westfraser.com/responsibility/  
recreation/frma/campgrounds

OBED LAKE • 780-865-2154  
35km E of Hinton on Hwy16  
www.westfraser.com/responsibility/  
recreation/frma/campgrounds

OLD ENTRANCE • 780-865-4760  
15km NE of Hinton on Hwy40  
www.oldentrance.ab.ca

PEMBINA FORKS • 780-865-2154  
118km S of Hinton on Hwy40  
www.westfraser.com/responsibility/  
recreation/frma/campgrounds

PETITE LAKE • 780-865-2154  
30km NW of Hinton on Hwy40, then  
16km E on Hay River road (OHV -  
Quadding)  
www.westfraser.com/responsibility/  
recreation/frma/campgrounds

PIERRE GREY'S • 780-827-7393/780-865-8395  
120km N of Hinton on Hwy40, then 3km E  
on access road • www.albertaparks.ca

ROCK LAKE • 780-865-2154  
45km NW of Hinton on Hwy 40, then 32km W  
on Rock Lake Road www.westfraser.com/  
responsibility/recreation/frma/campgrounds

WATSON CREEK • 780-865-2154  
58km S of Hinton on Hwy40 www.westfraser.  
com/responsibility/recreation/frma/campgrounds

WEALD GROUP • 780-723-0738  
39 km SW of Edson on Hwy 47  
www.albertaparks.ca

WHITEHORSE CREEK • 780-865-2154  
50km S of Hinton on Hwy40, then turn right,  
past Cadomin for 5km • www.westfraser.com/  
responsibility/recreation/frma/campgrounds

WILDHORSE LAKE • 780-866-2154  
25km W of Hinton off Hwy16 www.westfraser.  
com/responsibility/recreation/frma/campgrounds

## CAMPGROUNDS

WATSON CREEK • 780-865-2154  
58km S of Hinton on Hwy40 www.westfraser.  
com/responsibility/recreation/frma/campgrounds

WEALD GROUP • 780-723-0738  
39 km SW of Edson on Hwy 47  
www.albertaparks.ca

WHITEHORSE CREEK • 780-865-2154  
50km S of Hinton on Hwy40, then turn right,  
past Cadomin for 5km • www.westfraser.com/  
responsibility/recreation/frma/campgrounds

WILDHORSE LAKE • 780-866-2154  
25km W of Hinton off Hwy16 www.westfraser.  
com/responsibility/recreation/frma/campgrounds

For more camping opportunities please  
check out [www.explorehinton.org/  
accommodations/campgrounds](http://www.explorehinton.org/accommodations/campgrounds)

## DUMPING STATIONS

CANADIAN TIRE  
780-865-6157 • 868 Carmichael Lane

ESSO TRAVEL CENTRE  
780-817-3776 • 438 Smith Street

GREGG LAKE  
780-865-5600/780-865-8395  
William A. Switzer Prov. Park  
30 km NW of Hinton on Hwy 40

HUSKY CAR & TRUCK STOP  
780-865-2881 • Hwy 16

HINTON CENTRE CAMPGROUND  
780-865-0876 • 965 Switzer Drive

## TOUR OPERATORS

ALTERNATIVE ADVENTURES  
www.alternativeadventures.ca • 780-  
817-9696 Zip-lining.

BLACK CAT GUEST RANCH  
780-865-3084 • Hwy 40N to Brule  
www.blackcatguestranch.ca

DANNY BERRY  
780-865-7606 - Guide, resident cougar  
hunts & Trapline tours.

ENTRANCE RANCH & CABINS  
entrancerranch@gmail.com  
780-865-7549  
www.entrancerranch.com

HIKING WITH CLAIRE  
780-223-4498  
www.hikingwithclaire.net

HINTON NORDIC SKIERS  
hintonnordic.ca • hintonnordicskiers@  
gmail.com Cross-country skiing.

HORSEBACK ADVENTURES LTD.  
info@horsebackadventuresltd.com  
780-865-4777 • www.horseback-adventures.com

JASPER - HINTON AIR  
jasperhintonair@gmail.com  
1-780-817-4831

NORTHERN ROCKIES MUSEUM OF  
CULTURE AND HERITAGE  
225 Gregg Avenue  
780-801-2643

OLD ENTRANCE TRAIL RIDES  
oldentrance@yahoo.ca • 780-865-4760  
Scenic horseback trail rides

ROCKY MOUNTAIN ESCAPE  
ecolodge@xplornet.com • 780-865-0124  
Hiking, skiing, cross-country skiing.

ROCKY MOUNTAIN FISHING  
ADVENTURES  
fishingguides@hotmail.com  
780-865-5608

SUNDOG TOURS  
www.sundogtours.com  
888-786-3641

TIMBERWOLF TOURS  
info@timberwolftours.com  
780-470-4966

TOCKY 2 TOURS  
Chauffeur/limosine services and guided  
tours. 780-817-6191 • facebook.com/  
Tocky2tours

WILLIAM A. SWITZER PROVINCIAL PARK  
scott.sunderwald@gov.ab.ca • 780-865-5600  
Guided hikes & nature interpretation  
programs.

WOLFLAND TOURS  
info@wolflandtours.com • 780-817-2562

YELLOWHEAD HELICOPTERS  
jason.pitts@yhl.ca 780.865.3353  
www.Yhl.ca

## EQUIP. HIRE/ RENTALS

DR. DUNCAN MURRAY REC CENTRE  
Skate hire, courts, pool and arena  
rentals 805 Switzer Drive  
780-865-4412

OUTDOOR OUTFITTERS  
116 Market Street • 780-865-7679  
Cross country skis/Hiking gear

PAT'S CATERING/HINTON CENTRE  
Weddings, Events, Catering  
965 Switzer Drive • 780-865-0060

SWITZER PARK PADDLEBOARD RENTALS  
www.facebook.com/  
switzerparkpaddleboards  
Canoes, small & large paddleboards,  
kayaks, and windsurfers available for  
rent May to September.

VICIOUS CYCLE  
780-865-7787  
jasperbikerental@gmail.com  
Bike rentals & sales. Ski & Snowboard  
rentals & sales.

WILLIAM A. SWITZER PARK VISITOR CENTRE  
780-865-5600 (Seasonal) Winter  
equipment rentals available.

\*Is your listing missing in this Guide? Contact The Hinton & District Chamber of Commerce at 780-865-2777 to add or update your listing!



## RETAIL

### APPAREL

BASIC BEAUTY BOUTIQUE  
780.865.0098 • 113 ATHABASCA AVENUE  
CHRISTINE'S CLOTHES CLOSET  
780-865-5095 • 161 ATHABASCA AVENUE  
COLD CREEK BOUTIQUE  
181 PEMBINA AVENUE  
LEKKERWEAR  
780.223.4166 • 144 ATHABASCA AVE  
MARK'S WORK WEARHOUSE  
780-865-1544 • PARKS WEST MALL  
MAXIMUM OUTFITTERS  
780-865-7679 • 116 MARKET STREET  
SPORTS EXPERTS  
780-865-3085 • PARKS WEST MALL  
VICIOUS CYCLE  
780-865-7787 • 106 PARK STREET

### BANKING

ATB FINANCIAL  
780-865-2294 • 207 PEMBINA AVENUE  
RBC ROYAL BANK  
780-865-3344 • 874 CARMICHAEL LANE  
SCOTIABANK  
780-865-3377 • 432 CARMICHAEL LANE

SERVUS CREDIT UNION  
780-865-4000 • 1-108 ATHABASCA AVENUE

### CAR & RV RENTALS/SALES/REPAIR

BIG ROCK DODGE  
780-865-3010 • 186 TOCHER AVENUE\*\*  
GRIFFITHS FORD  
780-865-3354 • HWY 16, HINTON  
JASPER GATES RESORT  
780-866-3737 • 10 MINS WEST OF HINTON  
STETSON HINTON GM  
780-865-3801 • 363 GREGG AVENUE

### \*ELECTRIC CHARGING STATIONS

### CAR WASH

HINTON-JASPER TRAVEL CENTRE/ESSO  
780-817-3776 • 438 SMITH STREET  
HINTON TEMPO  
780-865-4046 • 106 MARKET STREET  
HINTON TRUCK & RV WASH  
780-865-5553 • 116 STEELE CRESCENT  
KWICK 'N' KLEEN  
780-865-3203 • 122 MACLEOD AVENUE  
OUTBACK EXPRESS LUBE &

WASH LUBE  
780-817-2252 B-102 JOBLIN STREET

### ENTERTAINMENT

HINTON MOVIES  
HINTONMOVIES.COM • 821 SWITZER DRIVE  
HEADQUARTERS BOWLING & GAME ROOM  
780-865-2748 • 105 ALLEN COVE DR. DUNCAN REC CENTRE  
805 SWITZER DRIVE • 780-865-4412  
HINTON MUNICIPAL LIBRARY  
805 SWITZER DRIVE • 780-865-2363  
PERFORMING ARTS THEATRE  
HINTON  
821 SWITZER DRIVE • 780-223-2787  
BREAK-A-LEG THEATRE  
WWW.BREAKALEGTHEATRE.COM • 780-817-8872  
WOODCUTTER LOUNGE  
780-865-2281 • TWIN PINE INN, 595 GREGG AVENUE

### DEPARTMENT STORES

CANADIAN TIRE  
780-865-6157 • 868 CARMICHAEL LANE  
DOLLARAMA  
780-865-2235 • PARKS WEST MALL

DOLLAR STORE  
780-865-2215 • 117 ATHABASCA AVE.  
HINTON HOME HARDWARE BUILDING CENTRE  
780-865-3371 • 582 CARMICHAEL LANE  
SHOPPERS DRUG MART  
780-865-5132 • 632 CARMICHAEL LANE  
WAL-MART  
780-865-1421 • PARKS WEST MALL

### GIFT SHOP/JEWELLERY

GOLD BRICK JEWELLER  
780-865-2775 • PARKS WEST MALL  
HUCKLEBERRY GIFT SHOP  
780-865-3079 • 189 PEMBINA AVENUE  
JUST BEE CAUSE HINTON  
780.865.1035 • 112 ATHABASCA AVE  
KING DRUG  
780-865-2645 • 145 ATHABASCA AVENUE  
MY SLICE OF PARADISE  
780.740.1241 • 148 ATHABASCA AVE  
SHOPPERS DRUG MART  
780-865-5132 • 632 CARMICHAEL LANE  
THE OLD GRIND  
780-865-1934 • 175 PEMBINA AVENUE



## Best Western Plus Hinton Inn & Suites

Welcome to the Best Western Plus Hinton Inn & Suites!

Located near the Jasper National Park and many attractions within your reach including William A. Switzer Park, Dr. Duncan Murray Recreation Centre and Beaver Boardwalk.

Our hotel is an ideal spot for a vacation, sports and corporate travel. We offer 100 spacious contemporary guest rooms and suites with full kitchens, 1500 square feet meeting space and Ricky's All Day Grill restaurant.

Our complimentary breakfast with hot items and fresh fruit starts your day off right.

For corporate travellers, it is the perfect location for the stay as it is near Innovista Eco-Industrial Park, West Fraser Timber and Teck Mining Company.

Take advantage of the meeting space with free high-speed Internet access for your business needs and keep up your exercise routine in our 24-hour fitness center. If you are here to relax, come swim in our indoor pool and relax in a hot tub.

The Best Western Plus Hinton Inn & Suites is waiting for you to stay with us for a day, week or month and feel like home away from home!



Complimentary Hot Breakfast  
Indoor Pool & Hot Tub  
24-Hour Fitness Facility  
Complimentary Parking

Ricky's All Day Grill Restaurant  
Short Drive to Jasper National Park  
Meeting Space  
Suites with Full Kitchen

Best Western Plus Hinton Inn & Suites, 340 Smith Street, Hinton, AB T7V 2A1  
p: 1.780.817.7000 f: 1.780.817.7001 [www.bestwestern.com/ca/PlusHintonInnandSuites](http://www.bestwestern.com/ca/PlusHintonInnandSuites)



778.471.9010





# RESTAURANTS

## GROCERIES

CANADA SAFEWAY  
780-865-5982 • PARKS WEST MALL  
FRESN BROS. HILL  
780-865-3061 • 632 CARMICHAEL LANE  
FRESN BROS. VALLEY  
780-865-4801 • 108 ATHABASCA AVE  
HAPPY CREEK HUSKY  
780-865-3511 • HWY 16 WEST  
HILLCREST CONVENIENCE  
780-865-4403 • 103 SEABOLT DRIVE  
JELES GROCERY  
780-865-7901 • 356 SWITZER DRIVE  
M&M MEATS  
780-865-1406 • 185 PEMBINA AVE  
SHOPPERS DRUG MART  
780-865-5132 • 632 CARMICHAEL LANE  
WEST END GROCERY  
780-865-2844 • 157 MOUNTAIN ST  
YUKON SAUSAGE  
780-865-5211 • 210 MARKET STREET

## LAUNDROMAT

HAPPY CREEK HUSKY  
780-865-3511 • 471 GREGG AVENUE  
RAMADA HOTEL  
780-865-4755 • 149 WOODLEY DRIVE  
SCRUBBIES  
780-865-2241 • 124 ATHABASCA AVE  
WEST ROCK CLEANERS  
780-865-7330 • 220 PEMBINA AVE

## LIQUOR/BREWING & CANNABIS

ACE DISCOUNT  
780-865-1907 • 632 CARMICHAEL LANE  
CROSSROADS LIQUOR OUTLET  
825.421.0070 • PARKS WEST MALL  
FIRE & FLOWER  
780-865-4818 • 261 GREGG AVE.  
FOLDING MOUNTAIN BREWING  
780-817-6287 • FOLDINGMOUNTAIN.COM  
HINTON LIQUOR STORE  
780-865-2616 • 125 JASPER STREET  
IMPERIAL LIQUOR  
780-865-3633 • 105 ATHABASCA AVE  
RANCHERS SPIRITS  
780-817-2356 • 438 SMITH STREET  
ROCKY MOUNTAIN COLLECTIVE  
780-800-4290 • HILL - 437 GREGG AVE  
780-800-4093 • VALLEY - 393  
DRINNAN WAY  
TIMBERLAND LIQUOR STORE  
780-865-2231 • 114 PARK STREET  
VALLEY LIQUOR OUTLET  
780-865-2205 • 114 ATHABASCA AVE  
THE WILD ORCHID  
780-865-3228 #100 - 1336 SWITZER DR

## MALL

PARKS WEST MALL  
780-865-1999 • 900 CARMICHAEL LANE

## MUSIC

MOUNTAIN MUSIC  
780-865-9768 #104 - 1336 SWITZER DR

## PET NEEDS & LIVESTOCK

DIANA'S PETS & TROPHIES  
780-865-7210 • 191 PEMBINA AVE.  
PET VALU  
780-865-2250 • 632 CARMICHAEL LANE

## PHARMACY

FRESN BROS HILL PHARMACY  
780-865-7455 #10632 CARMICHAEL LANE  
KING DRUG & HOME HEALTH CARE  
780-865-2645 • 145 ATHABASCA AVE  
REXALL PHARMACY (HILL)  
780-865-2473 • 177 PEMBINA AVENUE  
WAL-MART PHARMACY  
780-865-1575 • PARKS WEST MALL

## SPORTING GOODS/ HUNTING & FISHING

HIGH CALIBRE SPORTS  
780-865-3678 • 858B CARMICHAEL LANE  
HINTON HOME HARDWARE  
BUILDING CENTRE  
780-865-3371 • 582 CARMICHAEL LANE  
JELES GROCERY AND GAS  
780-865-7901 • 356 DRINNAN WAY  
MAXIMUM OUTFITTERS  
780-865-7679 • 116 MARKET STREET  
SPORTS EXPERTS  
780-865-3085 • PARKS WEST MALL  
VICIOUS CYCLE  
780-865-7787 • 106 PARK STREET

## OTHER

EXPRESSIONS HAIR STUDIO  
780-865-5777 • 395 DRINNAN WAY  
THE BRICK  
780-817-2122 • 566 SWITZER DR.  
THE SOURCE  
780-865-3360 • PARKS WEST MALL

## COFFEE SHOPS/BAKERY

OPA'S BAKERY  
780-865-0661 • 389 DRINNAN WAY  
STARBUCKS  
780-816-0151 • 263 GREGG AVE.  
THE OLD GRIND  
780-865-1934 • 175 PEMBINA AVE.  
TIM HORTONS  
780-865-4420 • 520 CARMICHAEL LANE  
& 325 GREGG AVENUE

## ETHNIC FOOD

CANADIAN STEAK OUT SPORTS  
BAR & GRILL (INDIAN)  
780-640-5443 • 417 GREGG AVE.  
FORTUNE HOUSE CHINESE  
RESTAURANT  
780-865-2999 • 150 ATHABASCA AVE.  
K&L SUSHI (JAPANESE)  
780-865-1819 • 201 PEMBINA AVE.  
KIMCHI HOUSE  
780.865.2120 • 571 GREGG AVE  
MOUNTAIN DONAIR  
780-865-5559 • 114 PARK ST.  
ROJO MARRON (MEXICAN)  
780-865-7664 • 163 ATHABASCA AVE.  
ROYAL GARDEN (CHINESE)  
780-865-1111 • 296 SMITH ST.  
TANDOORI KONA (INDIAN)  
587-765-0246 • 782 CARMICHAEL LANE  
WOW CHOW EXPRESS  
(FILIPINO & CHINESE)  
587-467-9909 • 216 PEMBINA AVE.

## FINE DINING

STONE PEAK RESTAURANT  
780-866-2330 • OVERLANDER  
MOUNTAIN LODGE, 15KM WEST OF HINTON  
ON HWY 16

## FAST FOOD

A & W  
780-865-3034 • 333 GREGG AVENUE  
DAIRY QUEEN  
780-865-8832 • 804 CARMICHAEL LANE  
DOMINO'S PIZZA  
780-740-0099 #1-554 CARMICHAEL LANE  
EDO JAPAN  
WWW.EDOJAPAN.COM  
FATBURGER  
780.865.1592 • 715 GREGG AVE  
FRESHII  
587-765-0146 • PARKS WEST MALL  
KFC  
780-865-3615 • 538 CARMICHAEL LANE  
MOUNTAIN DONAIR  
780-865-5559 • #1-114 PARK STREET  
MCDONALDS  
780-865-5227 • 840 CARMICHAEL LANE  
PAPA JOHNS  
587-765-0275 858C CARMICHAEL LN  
PIZZA HUT  
780-865-5098 • 554 CARMICHAEL LANE  
PRESS'D SANDWICH  
858 CARMICHAEL LN  
SUBWAY  
780-865-4525 #103-506 CARMICHAEL LANE  
WENDY'S  
632 CARMICHAEL LANE

## LOUNGES

CHEERS LOUNGE  
780-865-2241 • ATHABASCA VALLEY  
INN & SUITES, 124 ATHABASCA AVENUE  
FIRESIDE LOUNGE  
780-865-3321 HOLIDAY INN, 388 GREGG AVE  
RANCHERS SPORTS BAR & GRILL  
780-865-9785 • 438 SMITH STREET  
WOODCUTTER LOUNGE  
780-865-2281 595 GREGG AVE

## FAMILY RESTAURANTS

ATHABASCA VALLEY INN  
780-865-2241 • 124 ATHABASCA AVE.  
BOSTON PIZZA  
780-817-2400 #100-506 CARMICHAEL LANE  
BUSTERS PIZZA  
780 740-8328 343 GREGG AVE  
CANADIAN STEAK OUT SPORTS  
BAR & GRILL  
780-640-5443 • 417 GREGG AVE.  
FOLDING MOUNTAIN BREWERY  
780.817.6287 • 49321 FOLDING  
MOUNTAIN VILLAGE  
FORTUNE HOUSE CHINESE  
RESTAURANT  
780-865-2999 • 150 ATHABASCA AVE.  
GUS' PIZZA  
780-865-4232 • 346 HARDISTY AVE.  
HUSKY HOUSE RESTAURANT  
780-865-2881 • 511 GREGG AVE.  
L&W PIZZA AND SPAGHETTI HOUSE  
780-865-4892 • 414 CARMICHAEL LANE  
MILOS GRILL  
780-865-8844 • 120 FELABER ROAD  
MR. MIKE'S STEAKHOUSE CASUAL  
587-467-8580 • 900 CARMICHAEL LANE  
RANCHERS SPORTS BAR & GRILL  
780-865-9785 • 438 SMITH STREET  
RICKY'S ALL DAY GRILL  
780.865.7577 • 340 SMITH ST  
PANO BAR & GRILL  
780-865-2904 • 760 KIEL DRIVE, HINTON  
GOLF CLUB  
ROJO MARRON  
780-865-7664 • 163 ATHABASCA AVE.  
ROYAL GARDEN  
780-865-1111 • 296 SMITH STREET  
SMITTY'S RESTAURANT  
780-865-6151 • 445 GREGG AVE.  
TWIN PINE INN  
780-865-2281 • 595 GREGG AVE.

## FOOD TRUCKS

BIG BIRD BBQ  
587.782.5044 • BIGBIRDBBQ.CA  
JUNIPER PIZZA  
780-817-6287 49321 FOLDING AVE  
LAS TRES MARIA'S MEXICAN  
FOOD TRUCK  
780.931.9867 3MARIASFOODTRUCK.CA  
PAT'S CATERING  
780 865-6303



# LOCAL Businesses



# Everything's more clear out here.

YELLOWHEAD  
COUNTY

[www.exploreyellowhead.ca](http://www.exploreyellowhead.ca)



When you're in our backyard, do like Sasky, our resident Sasquatch, and enjoy the outdoors with respect—**don't leave a trace!**

**FIND IT CLEAN**  
**#LEAVE IT PRISTINE**

For more tips on how to enjoy the wilderness responsibly, please visit:

**PLEASE ENJOY IT WITH RESPECT.**

